



Population and Household Forecasts for Black Country Districts with an Ethnic Group Dimension

Report to Wolverhampton City Council

C3551 / October 2007

ECOTEC

► Priestley House
12-26 Albert Street
Birmingham
B4 7UD
United Kingdom

T +44 (0)121 616 3600
F +44 (0)121 616 3699
www.ecotec.com

Contents

1.	Introduction	1
1.1	Background to the Study	1
1.2	BME Communities in the Black Country	1
1.3	HDAM Variables	2
1.4	Re-grossing HDAM Population Projections to ONS 2004-based Subnational Projections	4
2.	Population Forecast.....	5
2.1	Population Projection for Dudley.....	5
2.2	Population Projection for Sandwell	7
2.3	Population Projection for Walsall	9
2.4	Population Projection for Wolverhampton.....	11
3.	Household Forecast - Scenario One	13
3.1	Household Projection for Dudley.....	13
3.2	Household Projection for Sandwell	15
3.3	Household Projection for Walsall	17
3.4	Household Projection for Wolverhampton	19
4.	Household Forecast - Scenario Two	21
3.1	Household Projection for Dudley.....	21
3.2	Household Projection for Sandwell	23
3.3	Household Projection for Walsall	25
3.4	Household Projection for Wolverhampton	27
5.	Implications	29
	Annex One: Household Forecast, Scenario Two.....	A1
	Annex Two: ONS 2004-based Sub-regional Projections.....	A4

1. Introduction

1.1 Background to the Study

This short report summarises population and household projections produced using the ECOTEC Research and Consulting Housing Demand Assessment Model (HDAM). The model uses standard forecasting techniques taking account of mortality rates, birth rates and migration figures to weight the projections for future population growth. HDAM differs from official sub-national projections in that it includes a Black and Minority Ethnic (BME) dimension.

Recently revised government household projections (ONS 2004-based subnational projections) represent a significant uplift on previous official projections, posing a challenge to local authorities, other housing providers and developers to meet expected additional housing demand.

The official government projections are limited in that they do not include an ethnic group component, but the ethnic composition of the Black Country suggests that the future dynamics of housing demand may not be simply as predicted by government projections. Therefore, the four Black Country authorities commissioned ECOTEC to undertake work to look at the implications of the government projections for future housing demand, taking account of the ethnic group composition of each of the four districts.

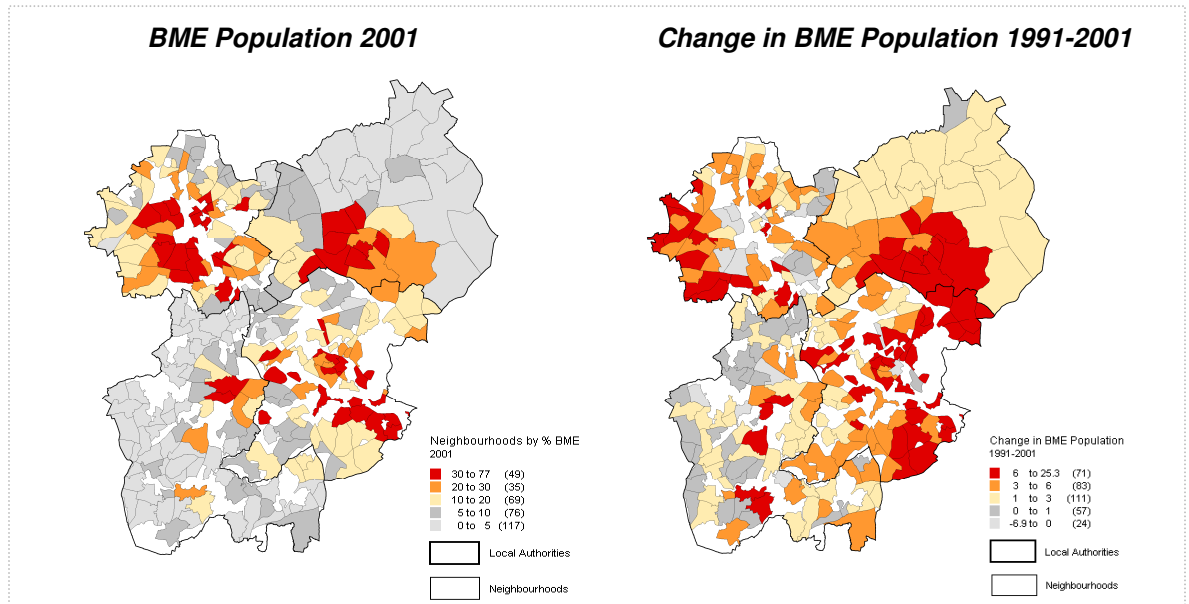
1.2 BME Communities in the Black Country

As Figure 1 indicates, there are currently distinct concentrations of BME communities particularly in the north of the Black Country and in Sandwell, adjacent to Birmingham. There is also evidence that a process of 'suburbanisation' of some BME communities (particularly the Indian community) is underway. However, other communities remain concentrated in the inner urban core.

The Black Country Study envisages that:

"Under current market conditions polarisation of poorer BME communities is set to continue. Birth rates and larger household sizes will mean increased overcrowding while these communities remain in the current housing stock. Access to other housing is restricted by affordability and increased competition from BME communities forced out of their 'traditional' residential areas in Birmingham by high prices induced by competition".

Figure 1: Black Country and Telford: BME Population 2001 and Change 1991-2001



1.3 HDAM Variables

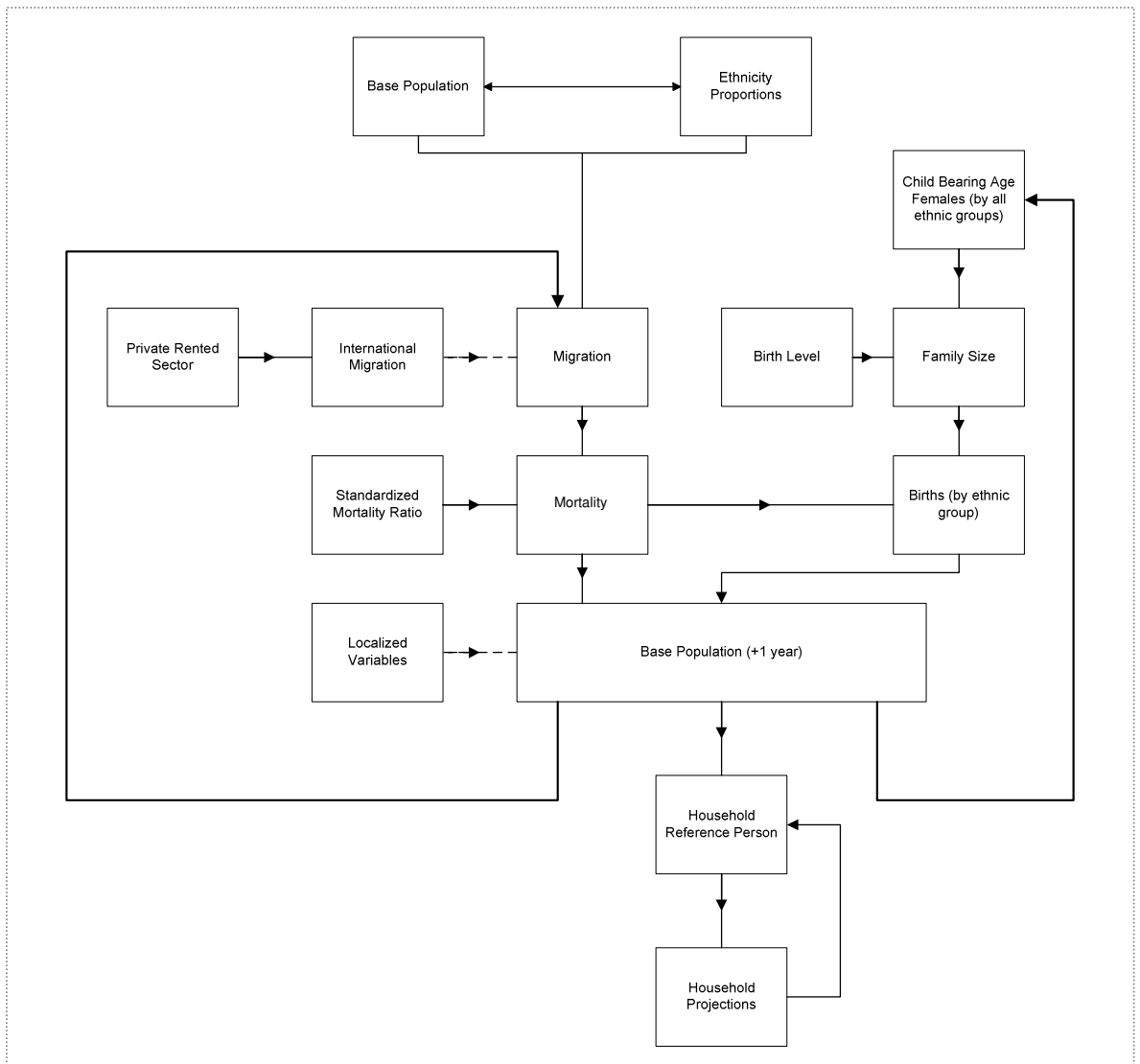
Numerous variables come together to produce population and household forecasts using HDAM. Where possible data relating directly to the reference area (or the closest proxy available) is used. Set out below are the key data inputs to the model:

- **Variable 1 - Base Population** (Source: ONS Population Census 2001 via NOMIS – census area statistics). All age groups and genders (including individuals living in both households and communal establishments);
- **Variable 2 – Ethnicity** (Source: ONS Population Census 2001 via NOMIS – census standard tables). All ethnic groups are included, by age and gender;
- **Variable 3 – Migration** (Source: ONS Population Census 2001 via NOMIS – census theme tables). All age groups are included, by inflows and outflows to the reference area;
- **Variable 4 – Household Reference Person** (Source: ONS Population Census 2001 via NOMIS – census area statistics). All age groups are included (in five year age bands, under 19 and over 90), by gender;
- **Variable 5 – Child Bearing Age** (Source: ONS Population Census 2001 via NOMIS – census standard tables). All females of child bearing age are included (16 to 44 years), by ethnicity;
- **Variable 6 – Mortality** (Source: ONS Population Trends (table 6.1 Deaths: Age and Sex). Mortality rates (per 1000); by all age groups and gender;
- **Variable 7 – Standardized Mortality Ratio** (Source: ONS Neighbourhood Statistics Standardised Mortality Ratios 2003). Mortality ratio by gender and reference area (to district / unitary authority level), indexed to UK = 100;
- **Variable 8 – Family Size** (Source: ONS Population Trends). National level family size data by ethnicity and level (achieved and desired);

- **Variable 9 – Age of Mother** (Source: ONS Health Statistics (table 3.1: Age of mother). National level data showing, by age group of child bearing age females (births per 1000);
- **Variable 10 – International Migration** (Source: RSS, West Midlands International Migration for the West Midlands, current and future figures);
- **Variable 11 – International Migration Proportions** (Source: ONS Population Census 2001 via NOMIS – census standard tables). Data used to apportion International Migration (West Midlands data, to smaller areas) using the Private Rented sector as a proxy.

The flow chart below demonstrates how the variables are used within the model and how populations are created, which in turn leads to the household forecast.

Figure 2: Housing Demand Assessment Model



1.4 Re-grossing HDAM Population Projections to ONS 2004-based Subnational Projections

In the case of this assignment the population component of the projection has been 'controlled' to ONS 2004-based subnational projections. The HDAM population projection has, in effect, been used to reapportion the ONS figures and derive an ethnic group component, which can then used to take forward the housing component of the model.

HDAM produces population and household projections by age and ethnicity. Invariably these projections are slightly different to projections produced by the Office for National Statistics, reflecting the diverse methodological and statistical approaches to producing projections. Using HDAM; ECOTEC are able to understand the apportionment of population projections by age and ethnic groups, and are able to recalculate these to reflect ONS 2004-based subnational projections.

The example in Table 1 shows the number of Males aged 0-4 as projected by HDAM in 2004, (650), along with the breakdown of 0-4 year old Males by ethnicity. The ONS sub-national projections 2004, provide projections for this cohort of 700 0-4 year old Males, as a total figure (ethnic proportions are not available). Using the proportion data produced by HDAM we are aware 65.4% of the 0-4 year old Male population are White. Re-grossing this percentage to the 700 (ONS 2004) total figure we can calculate there are 458 White 0-4 year old Males within this cohort.

Table 1: Re-grossing HDAM Population to ONS 2004-based Subnational Projections

	ALL	White	Mixed	Indian	Pakistani	Bangladeshi / other Asian	Black	Chinese / other
Males – aged 0-4 (HDAM)	650	425	40	75	50	25	25	10
<i>Proportion</i>		65.4%	6.2%	11.5%	7.7%	3.8%	3.8%	1.5%
Males – aged 0-4 (ONS)	700							
Re-grossed projection		458	43	81	54	27	27	11

The same methodology has been used for all age groups and gender, then these composite parts are added together to provide the recalculated population projections in-line with the ONS sub-national projections.

When looking at the ONS 2004 sub national projections in detail, it is important to note that the headline (total) figure is invariably slightly different to the sum of the age groups. Further information on such rounding errors can be found at:

http://www.statistics.gov.uk/downloads/theme_population/2004_BasedProj/InteractivePDF_2004-based_SNPP.pdf

2. Population Forecast

This section presents results of the ONS 2004-based subnational re-grossed projection. The ONS projections have been reapportioned using HDAM outputs in order to estimate age-groups and ethnicity, and take forward the household component of the model with an ethnic group dimension (see Sections 1.3 and 1.4 of this report for a summary of how the ONS data has been re-grossed).

2.1 Population Projection for Dudley

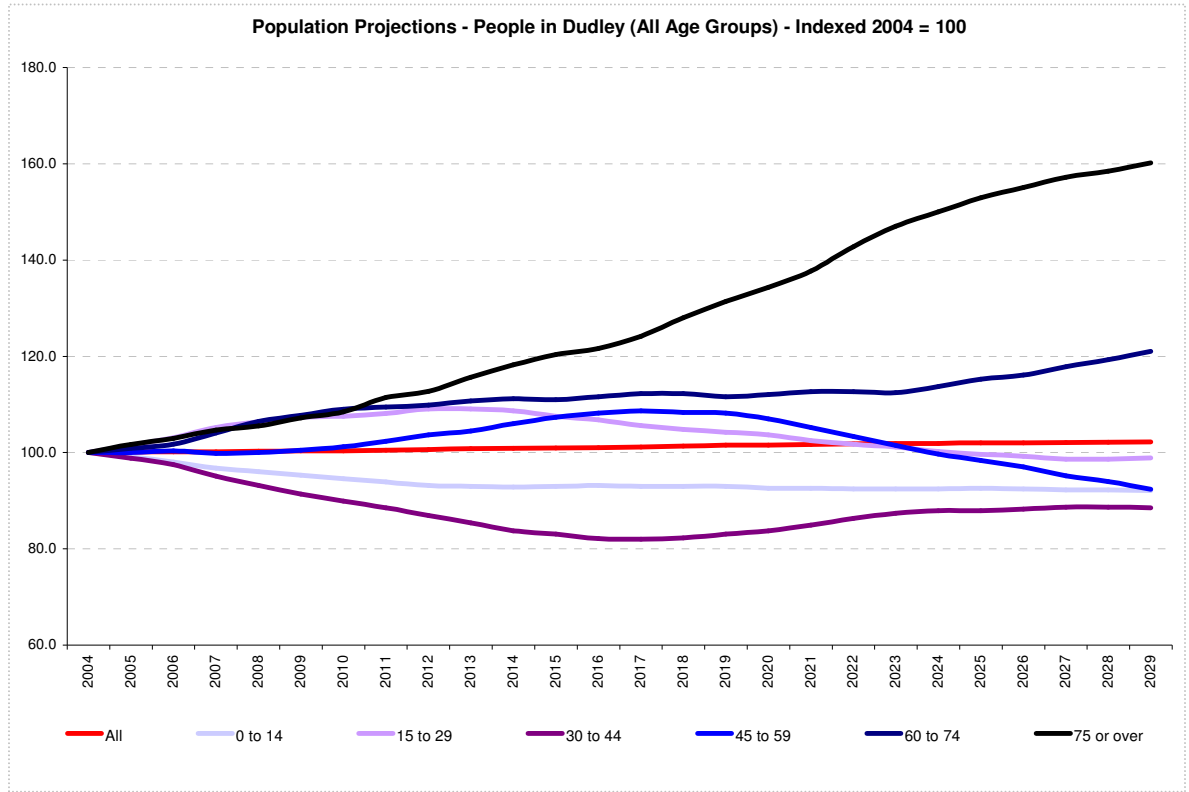
Table 2 shows the results of the population projection for Dudley. Overall, the population is predicted to grow from 304,700 in 2004 to reach 310,900 by 2026. The model shows that the White population will decline from 284,000 to 277,250, such that the White population will make up 89% of the total in 2026 compared to 93% in 2004. The Bangladeshi / other Asian (117%), Pakistani (81%) and mixed ethnicity populations (76%) are expected to grow most significantly over the period of the forecast.

Table 2: Population Change to 2026, Dudley

	ALL	White	Mixed	Indian	Pakistani	Bangladeshi / other Asian	Black	Chinese / other
2004	304,700	284,000	3,300	5,050	6,800	1,400	3,100	1,250
2006	305,200	283,400	3,400	5,250	7,200	1,550	3,200	1,300
2008	305,500	282,750	3,550	5,450	7,650	1,700	3,300	1,350
2010	305,700	281,950	3,700	5,600	8,050	1,800	3,350	1,400
2012	306,600	281,750	3,900	5,750	8,500	1,950	3,450	1,450
2014	307,400	281,400	4,100	5,900	9,000	2,100	3,550	1,500
2016	307,800	280,650	4,350	6,100	9,500	2,250	3,650	1,550
2018	308,700	280,350	4,600	6,200	10,000	2,400	3,750	1,550
2020	309,500	279,900	4,850	6,350	10,550	2,550	3,850	1,600
2022	310,200	279,300	5,150	6,500	11,100	2,700	3,950	1,650
2024	310,500	278,250	5,500	6,600	11,700	2,850	4,050	1,700
2026	310,900	277,250	5,800	6,700	12,350	3,050	4,150	1,750

Figure 3 shows the changing age structure of Dudley's population over the period of the forecast. As this indicates, the population aged 60 and over is expected to increase over the course of the forecast. Other age cohorts are expected to grow up to the mid-period of the forecast before gradually declining (15 – 29 year olds and 45 – 59 year olds) whilst others are expected to begin to decline immediately (0 – 14 year olds and 30 – 44 year olds).

Figure 3: Population Change to 2026, Dudley (age groups)



Analysis of ethnic composition and age-group suggests that the younger White population (aged under 19) will decline from 22% to 19% of the total population whereas the older White population (aged 65+) will grow from 15% to 19% of the total population. On the other hand, the younger Pakistani population is expected to grow from 1% of the population to reach 2% of the population by 2026.

Table 3: Ethnic Composition and Age Group 2004 and 2006, Dudley (distribution)

	White	Mixed	Indian	Pakistani	Bangladeshi / other Asian	Black	Chinese / other
2004	0 to 9	10.8	0.4	0.2	0.5	0.1	0.1
	10 to 19	11.5	0.3	0.3	0.5	0.1	0.1
	20 to 39	24.9	0.2	0.6	0.7	0.1	0.4
	40 to 64	31.4	0.1	0.5	0.4	0.1	0.3
	65 +	14.7	0.0	0.1	0.1	0.0	0.1
	2026	0 to 9	9.3	0.4	0.3	0.8	0.2
10 to 19		9.6	0.3	0.3	0.7	0.2	0.2
20 to 39		21.9	0.7	0.5	1.1	0.3	0.3
40 to 64		29.5	0.3	0.7	1.0	0.2	0.5
65 +		19.0	0.1	0.3	0.3	0.1	0.2

2.2 Population Projection for Sandwell

Table 4 shows the results of the population projection for Sandwell. Overall, the population is predicted to grow from 286,100 in 2004 to reach 297,200 by 2026. The model shows that the White population will decline from 225,000 to 210,550, such that the White population will make up 71% of the total in 2026 compared to 79% in 2004. The Pakistani (79%), Bangladeshi / other Asian (75%), and mixed ethnicity populations (73%) of Sandwell are expected to grow most significantly over the period of the forecast.

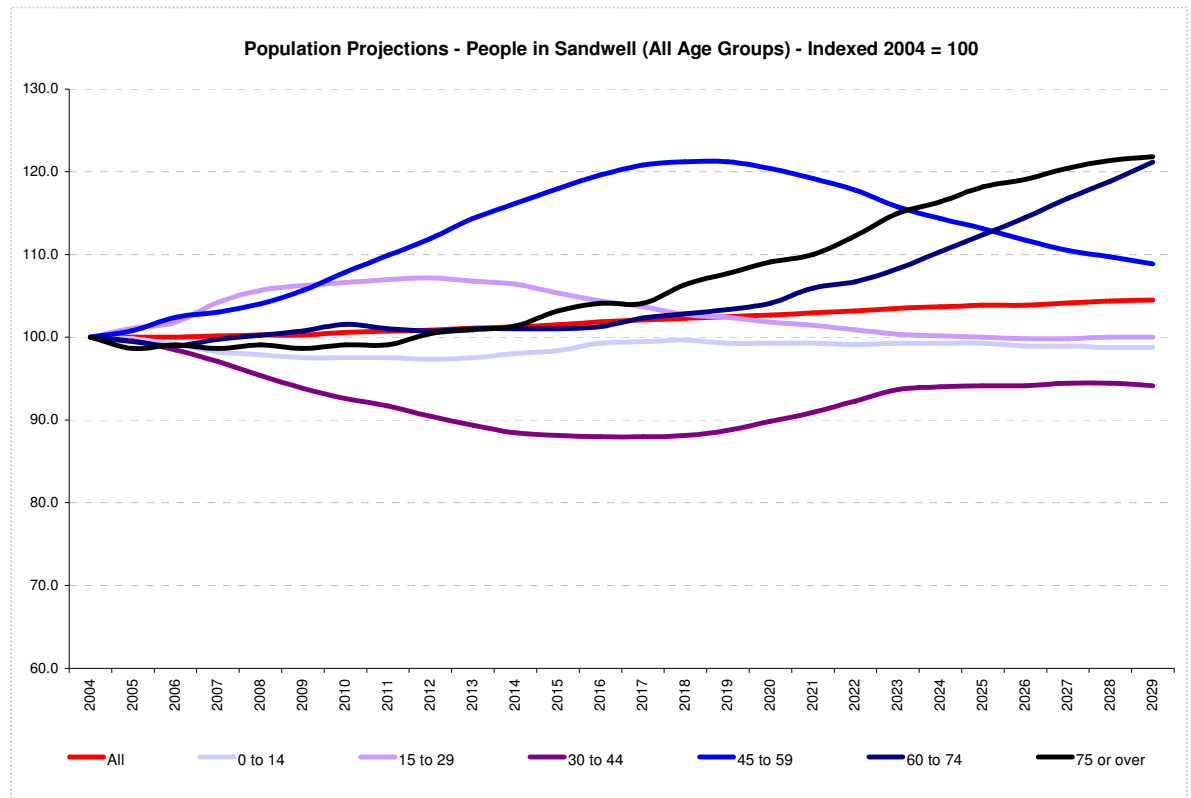
Table 4: Population Change to 2026, Sandwell

	ALL	White	Mixed	Indian	Pakistani	Bangladeshi / other Asian	Black	Chinese / other
2004	286,100	225,000	6,400	27,250	9,150	6,000	11,350	1,150
2006	286,200	223,050	6,550	28,000	9,650	6,350	11,550	1,150
2008	286,900	221,500	6,850	28,750	10,250	6,750	11,800	1,200
2010	287,800	220,150	7,150	29,450	10,800	7,100	12,050	1,250
2012	288,600	218,700	7,500	30,100	11,400	7,500	12,250	1,300
2014	289,700	217,450	7,950	30,650	12,050	7,900	12,500	1,300
2016	291,400	216,750	8,400	31,300	12,700	8,300	12,750	1,350
2018	292,700	215,700	8,900	31,750	13,400	8,700	12,950	1,400
2020	293,800	214,500	9,450	32,250	14,100	9,100	13,200	1,450
2022	295,200	213,400	10,000	32,700	14,850	9,550	13,400	1,450
2024	296,600	212,300	10,550	33,100	15,600	10,050	13,700	1,500
2026	297,200	210,550	11,050	33,400	16,400	10,500	13,900	1,550

Figure 4 shows the changing age structure of Sandwell's population over the period of the forecast. As this indicates, the population aged 60 and over is expected to increase over the course of the forecast, though not as markedly as in Dudley due to the less predominant majority White population and current young age structure of the BME population.

The 45 - 59 age cohort is expected to grow steeply up to the mid-period of the forecast before gradually beginning to decline. On the other hand, the 30 – 44 age cohort declines immediately before beginning to grow again towards the end of the forecast period.

Figure 4: Population Change to 2026, Sandwell (age groups)



Analysis of ethnic composition and age-group suggests that the older White population of Sandwell (aged 65+) will remain relatively static over the period of the forecast. Conversely, older Asian populations will grow slightly. The younger White population will decline slightly, whereas the younger Asian population is expected to grow slightly.

Table 5: Ethnic Composition and Age Group 2004 and 2006, Sandwell (distribution)

	White	Mixed	Indian	Pakistani	Bangladeshi / other Asian	Black	Chinese / other
2004	0 to 9	9.4	0.7	1.5	0.8	0.5	0.1
	10 to 19	9.9	0.6	1.7	0.7	0.4	0.0
	20 to 39	21.9	0.5	3.4	1.1	0.7	0.2
	40 to 64	24.7	0.2	2.4	0.5	0.3	0.1
	65 +	13.1	0.0	0.5	0.1	0.1	0.0
	2026	0 to 9	8.1	0.8	1.6	1.2	0.7
10 to 19		8.0	0.5	1.6	1.0	0.6	0.1
20 to 39		18.8	1.5	3.1	1.7	1.1	0.1
40 to 64		23.2	0.7	3.6	1.3	0.9	0.2
65 +		12.9	0.1	1.3	0.3	0.2	0.1

2.3 Population Projection for Walsall

Table 6 shows the results of the population projection for Walsall. Overall, the population is predicted to decline from 253,200 in 2004 to reach 249,400 by 2026. The model shows that the White population will decline from 217,300 to 201,250, such that the White population will make up 81% of the total in 2026 compared to 86% in 2004. The mixed ethnicity (58%), Pakistani (57%) and Bangladeshi / other Asian (50%) populations of Walsall are expected to grow most significantly over the period of the forecast.

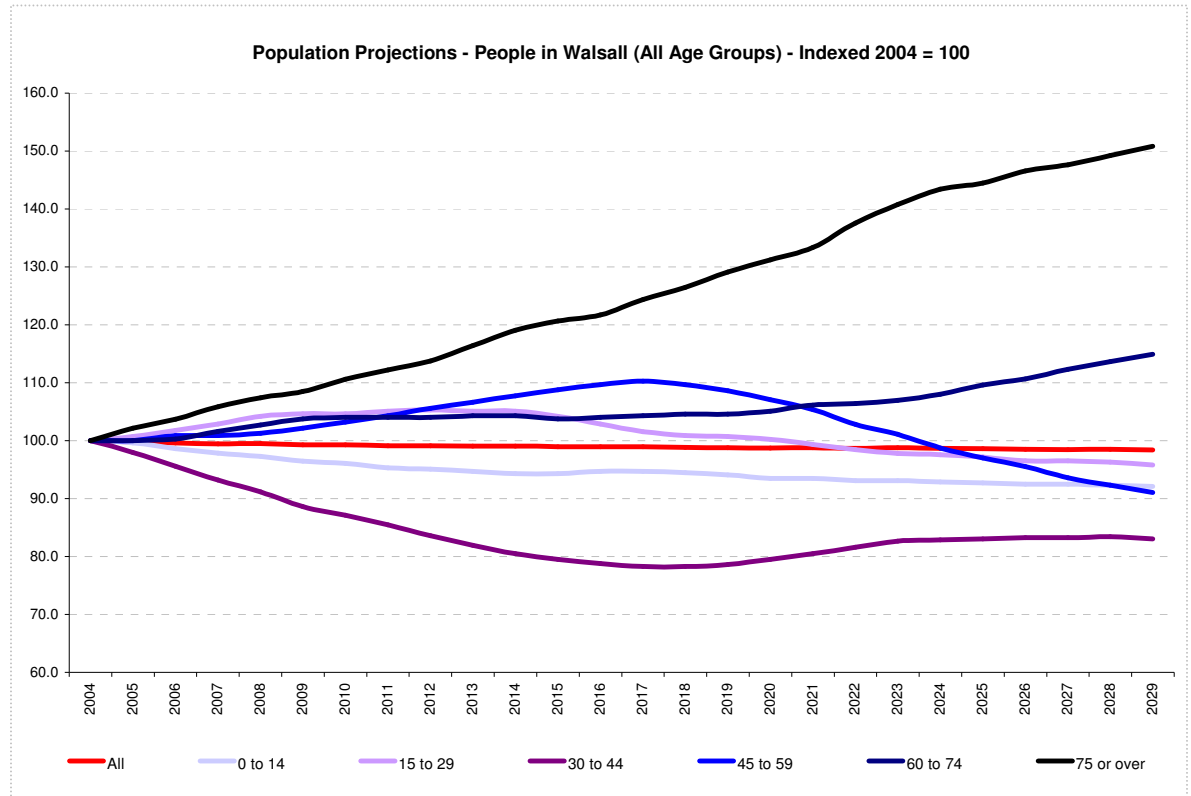
Table 6: Population Change to 2026, Walsall

	ALL	White	Mixed	Indian	Pakistani	Bangladeshi / other Asian	Black	Chinese / other
2004	253,200	217,300	3,800	14,200	9,950	3,600	3,600	950
2006	252,100	215,350	3,850	14,450	10,350	3,750	3,650	950
2008	251,900	214,150	3,950	14,650	10,800	3,850	3,650	950
2010	251,300	212,550	4,100	14,900	11,250	4,000	3,700	1,000
2012	250,900	211,050	4,250	15,150	11,700	4,200	3,750	1,000
2014	250,800	209,850	4,450	15,350	12,200	4,350	3,800	1,000
2016	250,400	208,300	4,650	15,550	12,750	4,500	3,850	1,000
2018	250,200	206,950	4,900	15,700	13,250	4,650	3,900	1,050
2020	250,000	205,600	5,150	15,850	13,800	4,850	3,900	1,050
2022	249,800	204,200	5,400	15,950	14,350	5,000	3,950	1,050
2024	249,800	202,900	5,700	16,100	15,000	5,200	4,000	1,050
2026	249,400	201,250	6,000	16,200	15,600	5,400	4,050	1,050

Figure 5 shows the changing age structure of Dudley's population over the period of the forecast. As in Dudley, the population aged 60 and over is expected to increase most significantly over the course of the forecast, with the population aged 75 and over growing most sharply.

The 45 - 59 age cohort is expected to grow slightly up to the mid-period of the forecast before gradually beginning to decline. On the other hand, the 30 – 44 age cohort declines immediately before beginning to grow again towards the end of the forecast period. The 0 – 14 age cohort declines gradually over the whole period of the forecast.

Figure 5: Population Change to 2026, Walsall (age groups)



Analysis of ethnic composition and age-group suggests that the older White population of Walsall (aged 65+) will grow from 14% to 17% of the total population. The older Indian population will grow slightly from less than half a percent to nearly 1%. The younger White population will decline slightly. The younger Indian population will remain fairly static in overall terms, whereas the younger Pakistani and Bangladeshi / other Asian population is expected to grow slightly.

Table 7: Ethnic Composition and Age Group 2004 and 2006, Walsall (distribution)

	White	Mixed	Indian	Pakistani	Bangladeshi / other Asian	Black	Chinese / other
2004	0 to 9	10.5	0.5	0.9	1.0	0.4	0.1
	10 to 19	10.9	0.4	0.9	0.8	0.3	0.1
	20 to 39	22.4	0.3	1.9	1.3	0.4	0.1
	40 to 64	28.3	0.1	1.5	0.6	0.2	0.1
	65 +	14.0	0.0	0.3	0.1	0.0	0.1
2026	0 to 9	9.3	0.5	0.9	1.3	0.5	0.0
	10 to 19	9.3	0.3	0.9	1.2	0.4	0.1
	20 to 39	19.2	0.9	1.7	1.8	0.6	0.1
	40 to 64	25.9	0.4	2.0	1.5	0.5	0.2
	65 +	17.2	0.1	0.9	0.4	0.1	0.2

2.4 Population Projection for Wolverhampton

Table 8 shows the results of the population projection for Wolverhampton. Overall, the population is predicted to grow from 139,000 in 2004 to reach 241,800 by 2026. The model shows that the White population will decline from 182,650 to 163,600, such that the Bangladeshi / other Asian (146%), Pakistani (134%) and mixed ethnicity (63%) populations of Wolverhampton are expected to grow most significantly over the period of the forecast.

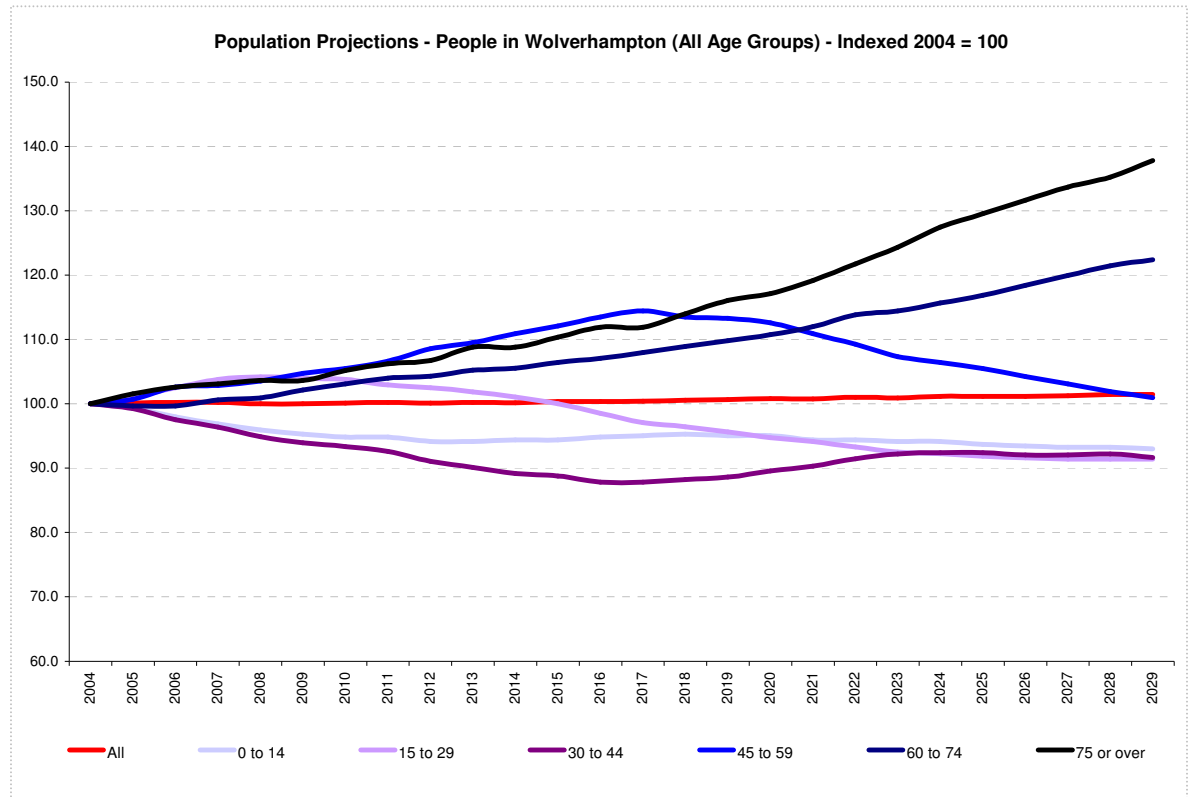
Table 8: Population Change to 2026, Wolverhampton

	ALL	White	Mixed	Indian	Pakistani	Bangladeshi / other Asian	Black	Chinese / other
2004	239,000	182,650	6,850	30,650	3,650	2,400	11,450	1,550
2006	239,500	180,950	7,050	31,450	4,100	2,750	11,700	1,650
2008	239,000	178,500	7,300	32,050	4,500	3,100	11,950	1,750
2010	239,300	176,900	7,600	32,700	4,900	3,400	12,150	1,850
2012	239,200	174,950	7,950	33,200	5,300	3,700	12,350	1,900
2014	239,400	173,250	8,350	33,700	5,700	3,950	12,600	2,000
2016	239,900	171,800	8,800	34,200	6,100	4,250	12,850	2,050
2018	240,300	170,200	9,250	34,650	6,550	4,550	13,100	2,150
2020	240,900	168,750	9,750	35,100	7,050	4,850	13,350	2,200
2022	241,400	167,250	10,250	35,500	7,500	5,200	13,600	2,250
2024	241,800	165,550	10,750	35,900	8,050	5,550	13,900	2,350
2026	241,800	163,600	11,150	36,150	8,550	5,900	14,200	2,400

Figure 6 shows the changing age structure of Wolverhampton's population over the period of the forecast. As in other districts, the population aged 60 and over is expected to increase most significantly over the course of the forecast, with the population aged 75 and over growing most sharply.

The 45 - 59 age cohort is expected to grow slightly up to the mid-period of the forecast before gradually beginning to decline. On the other hand, the 30 – 44 age cohort declines immediately before beginning to grow again towards the end of the forecast period. The 0 – 14 and 15 – 29 age cohorts decline gradually over the period of the forecast.

Figure 6: Population Change to 2026, Wolverhampton (age groups)



Analysis of ethnic composition and age-group suggests that the older White population of Wolverhampton (aged 65+) will grow slightly from 13% to 14% of the total population. The older Indian population will grow comparatively sharply (compared to the other Black Country districts) from 1% to 2% of the population. The younger White population will decline slightly. The younger Indian population will remain fairly static in overall terms, whereas the younger Pakistani and Bangladeshi / other Asian population is expected to grow slightly.

Table 9: Ethnic Composition and Age Group 2004 and 2006, Wolverhampton (distribution)

	White	Mixed	Indian	Pakistani	Bangladeshi / other Asian	Black	Chinese / other
2004	0 to 9	8.6	0.9	1.9	0.3	0.1	0.6
	10 to 19	9.8	0.9	2.1	0.3	0.1	0.7
	20 to 39	21.1	0.7	4.5	0.5	0.4	1.6
	40 to 64	23.9	0.2	3.4	0.2	0.3	1.2
	65 +	13.3	0.0	0.8	0.1	0.1	0.6
	2026	0 to 9	7.2	0.9	2.0	0.7	0.3
10 to 19		7.3	0.6	2.0	0.6	0.4	0.7
20 to 39		17.7	2.0	4.1	1.1	0.6	1.5
40 to 64		21.6	0.9	4.7	0.9	0.8	1.9
65 +		14.1	0.1	2.1	0.3	0.3	0.9

3. Household Forecast - Scenario One

This section (and the following section) summarises the implications - in terms of future housing demand - of the re-grossed ONS projection, with an ethnic group component. Household projections have been produced for two scenarios. These are:

- Scenario one - constant average household sizes; and
- Scenario two – slightly decreasing average households sizes.

This section concentrates on scenario one.

3.1 Household Projection for Dudley

Under scenario one HDAM predicts that the population growth of 6,200 over the period 2004 – 2026 will translate into an additional 10,450 households. Households headed by White ethnic groups are expected to account for 45% (4,700) of this additional demand due largely to an increasing number of one and two person households over the period (see Table 11).

Pakistani and Bangladeshi / other Asian groups will cumulatively account for around a quarter of additional housing demand (2,750 households) in Dudley. The Indian community is predicted to account for 9% (750) of the overall additional households expected to form over the forecast period.

Table 10: Household Change to 2026, Dudley (ethnicity of HRP) – Constant Household Size

	ALL	White	Mixed	Indian	Pakistani	Bangladeshi / other Asian	Black	Chinese / other
2004	127,900	121,750	500	1,800	1,800	450	1,250	450
2006	128,550	121,950	550	1,950	1,950	500	1,300	450
2008	129,150	122,150	650	2,000	2,150	550	1,350	500
2010	130,050	122,600	750	2,100	2,300	600	1,400	500
2012	131,250	123,300	850	2,200	2,450	650	1,450	550
2014	132,650	124,150	950	2,300	2,650	700	1,500	600
2016	133,700	124,650	1,100	2,350	2,800	750	1,550	600
2018	135,250	125,700	1,250	2,450	3,000	800	1,600	650
2020	136,200	126,100	1,400	2,500	3,200	850	1,650	650
2022	137,100	126,400	1,500	2,600	3,450	900	1,700	700
2024	137,700	126,400	1,650	2,650	3,700	1,000	1,750	700
2026	138,350	126,450	1,800	2,750	3,950	1,050	1,800	750

Table 11: Household Composition to 2026, Dudley (ethnicity of HRP) – Constant Household Size

Household Composition - 1 person								
	Total	White	Mixed	Indian	Pakistani	Bangladeshi / other Asian	Black	Chinese / other
2004	34,433	33,389	140	230	159	49	406	59
2006	34,562	33,445	158	243	175	56	422	63
2008	34,678	33,491	179	255	190	61	434	67
2010	34,876	33,614	205	266	205	67	448	72
2012	35,152	33,804	237	278	220	73	463	76
2014	35,481	34,045	273	288	236	80	479	80
2016	35,713	34,185	311	299	252	87	495	85
2018	36,086	34,464	350	309	269	94	510	89
2020	36,292	34,575	391	319	288	100	526	93
2022	36,475	34,659	433	328	308	108	542	97
2024	36,579	34,662	475	337	330	116	559	101
2026	36,694	34,673	517	346	352	124	576	106
% change	+6.6	+3.8	+269.3	+50.4	+121.4	+153.1	+41.9	+79.7
Household Composition - 2 people								
	Total	White	Mixed	Indian	Pakistani	Bangladeshi / other Asian	Black	Chinese / other
2004	37,138	36,187	79	304	206	41	227	94
2006	37,352	36,330	88	326	222	48	236	101
2008	37,657	36,561	100	349	240	53	244	110
2010	38,053	36,873	113	374	262	59	252	120
2012	38,514	37,239	130	400	286	65	261	131
2014	39,064	37,686	150	427	314	72	273	143
2016	39,447	37,963	170	453	342	79	284	155
2018	40,012	38,413	192	481	374	86	297	168
2020	40,341	38,628	216	507	407	93	311	180
2022	40,660	38,823	240	532	445	100	326	194
2024	40,934	38,964	265	559	488	108	342	208
2026	41,247	39,131	291	587	536	117	360	224
% change	+11.1	+8.1	+268.4	+93.1	+160.2	+185.4	+58.6	+138.3
Household Composition - 3 or more people								
	Total	White	Mixed	Indian	Pakistani	Bangladeshi / other Asian	Black	Chinese / others
2004	56,282	52,168	264	1,265	1,403	317	613	251
2006	56,617	52,171	299	1,335	1,546	360	637	269
2008	56,798	52,064	340	1,389	1,671	394	655	285
2010	57,117	52,078	390	1,442	1,804	428	674	301
2012	57,578	52,215	451	1,495	1,935	470	696	317
2014	58,089	52,405	519	1,542	2,065	512	718	329
2016	58,511	52,498	592	1,587	2,200	555	739	342
2018	59,137	52,787	666	1,630	2,344	598	757	354
2020	59,557	52,866	744	1,668	2,497	642	776	365
2022	59,943	52,894	823	1,706	2,662	688	795	376
2024	60,173	52,759	900	1,739	2,837	739	812	388
2026	60,407	52,620	978	1,772	3,017	792	830	399
% change	+7.3	+0.9	+270.5	+40.1	+115.0	+149.8	+35.4	+59.0

3.2 Household Projection for Sandwell

The population growth of 11,100 over the forecast period predicted for Sandwell is expected to translate into formation of an additional 8,800 households. In contrast with Dudley, households headed by White ethnic groups are expected to fall by 3,800 in Sandwell over the period to 2026: One person, two person and three person White households are all expected to decline in actual terms and as a proportion of the total households in the borough (see Table 13).

Pakistani and Bangladeshi / other Asian groups will cumulatively account for over 40% of additional housing demand (4,650 households) in Sandwell. Indian groups will account for 35% of additional demand (3,850 households), and mixed ethnicity will account for nearly a quarter (2,600 households).

Table 12: Household Change to 2026, Sandwell (ethnicity of HRP) – Constant Household Size

	ALL	White	Mixed	Indian	Pakistani	Bangladeshi / other Asian	Black	Chinese / other
2004	119,900	99,900	1,050	9,800	2,500	1,800	4,500	450
2006	119,950	98,950	1,200	10,250	2,700	1,950	4,600	500
2008	120,400	98,350	1,350	10,650	2,950	2,100	4,700	500
2010	121,200	98,000	1,550	11,050	3,150	2,250	4,800	550
2012	121,850	97,550	1,750	11,450	3,400	2,350	4,950	550
2014	122,700	97,250	2,000	11,800	3,650	2,500	5,050	550
2016	123,950	97,300	2,300	12,150	3,900	2,700	5,200	600
2018	125,100	97,300	2,550	12,450	4,150	2,850	5,300	600
2020	126,000	97,050	2,850	12,800	4,450	3,000	5,400	650
2022	126,950	96,750	3,100	13,100	4,700	3,200	5,550	650
2024	128,000	96,600	3,400	13,400	5,050	3,400	5,700	700
2026	128,700	96,100	3,650	13,650	5,350	3,600	5,800	700

Table 13: Household Composition to 2026, Sandwell (ethnicity of HRP) – Constant Household Size

Household Composition - 1 person								
	Total	White	Mixed	Indian	Pakistani	Bangladeshi / other Asian	Black	Chinese / other
2004	35,764	32,097	277	1,192	258	193	1,628	119
2006	35,615	31,791	308	1,245	280	207	1,657	127
2008	35,594	31,591	353	1,294	304	222	1,696	134
2010	30,997	22,428	501	5,180	473	662	1,643	108
2012	35,725	31,338	463	1,393	353	254	1,778	146
2014	35,826	31,243	529	1,435	378	269	1,821	152
2016	36,062	31,264	599	1,479	404	286	1,871	158
2018	36,263	31,264	670	1,517	432	304	1,911	164
2020	36,388	31,183	747	1,555	460	322	1,951	170
2022	36,512	31,090	821	1,592	490	343	1,998	177
2024	36,677	31,033	892	1,628	523	365	2,053	183
2026	36,720	30,867	960	1,658	555	388	2,101	190
% change	+2.7	-3.8	+246.6	+39.1	+115.1	+101.0	+29.1	+59.7
Household Composition - 2 people								
	Total	White	Mixed	Indian	Pakistani	Bangladeshi / other Asian	Black	Chinese / other
2004	30,346	22,855	342	4,608	374	536	1,541	91
2006	30,449	22,617	382	4,808	403	576	1,568	97
2008	30,678	22,489	438	4,990	436	618	1,605	102
2010	30,997	22,428	501	5,180	473	662	1,643	108
2012	31,280	22,344	573	5,353	509	706	1,682	113
2014	31,594	22,304	653	5,499	548	751	1,722	118
2016	32,018	22,343	737	5,658	589	800	1,766	124
2018	32,405	22,379	822	5,789	634	851	1,801	129
2020	32,740	22,357	912	5,917	680	905	1,834	135
2022	33,095	22,341	997	6,045	732	965	1,873	142
2024	33,539	22,412	1,075	6,162	791	1,034	1,917	149
2026	33,881	22,406	1,148	6,260	852	1,104	1,955	155
% change	+11.6	-2.0	+235.7	+35.9	+127.8	+106.0	+26.9	+70.3
Household Composition - 3 or more people								
	Total	White	Mixed	Indian	Pakistani	Bangladeshi / other Asian	Black	Chinese / others
2004	53,760	44,927	422	3,978	1,841	1,057	1,319	217
2006	53,856	44,520	469	4,159	2,001	1,136	1,341	230
2008	54,095	44,225	537	4,331	2,167	1,220	1,373	242
2010	54,490	44,045	615	4,514	2,347	1,307	1,406	255
2012	54,838	43,834	705	4,684	2,520	1,391	1,440	264
2014	55,237	43,674	806	4,836	2,694	1,477	1,476	274
2016	55,842	43,679	915	5,000	2,877	1,569	1,519	284
2018	56,398	43,644	1,029	5,141	3,070	1,665	1,555	294
2020	56,847	43,494	1,150	5,282	3,264	1,762	1,592	303
2022	57,301	43,315	1,270	5,424	3,473	1,870	1,636	314
2024	57,765	43,123	1,387	5,563	3,692	1,988	1,687	324
2026	58,050	42,777	1,503	5,687	3,908	2,106	1,735	334
% change	+8.0	-4.8	+256.2	+43.0	+112.3	+99.2	+31.5	+53.9

3.3 Household Projection for Walsall

The population decline of 3,800 predicted for Walsall is expected to translate into formation of an additional 3,250 households. Households headed by White ethnic groups are expected to fall by 2,800 in Walsall, driven by a declining number of one person households and households containing three or more persons.

Pakistani and Bangladeshi / other Asian groups will cumulatively account for over 90% of total additional housing demand (3,050 households) in Walsall. Indian groups will account for over 40% of additional demand (1,400 households), as will those with mixed ethnicity heads of household (1,300 households).

Notably, the number of mixed ethnicity headed households is expected to increase markedly over the course of the forecast period even though this group will still only make up 2% of all households by 2026. The number of two person Pakistani households will more than double over the period.

Table 14: Household Change to 2026, Walsall (ethnicity of HRP) – Constant Household Size

	ALL	White	Mixed	Indian	Pakistani	Bangladeshi / other Asian	Black	Chinese / other
2004	103,600	92,900	550	5,000	2,550	950	1,400	350
2006	103,400	92,250	600	5,150	2,750	1,000	1,400	400
2008	103,650	92,050	700	5,300	2,900	1,050	1,450	400
2010	103,950	91,800	800	5,450	3,050	1,150	1,450	400
2012	104,250	91,600	900	5,600	3,250	1,200	1,500	400
2014	104,800	91,600	1,000	5,700	3,450	1,250	1,500	400
2016	105,050	91,350	1,150	5,850	3,650	1,300	1,500	400
2018	105,700	91,400	1,300	6,000	3,850	1,400	1,550	450
2020	106,100	91,200	1,450	6,100	4,050	1,450	1,550	450
2022	106,300	90,800	1,550	6,200	4,300	1,500	1,600	450
2024	106,650	90,500	1,700	6,300	4,550	1,600	1,600	450
2026	106,850	90,100	1,850	6,400	4,850	1,700	1,650	450

Table 15: Household Composition to 2026, Walsall (ethnicity of HRP) – Constant Household Size

Household Composition - 1 person									
	Total	White	Mixed	Indian	Pakistani	Bangladeshi / other Asian	Black	Chinese / other	
2004	27,969	26,426	138	533	239	65	490	77	
2006	27,850	26,249	155	551	254	68	493	80	
2008	27,846	26,180	178	567	269	72	498	81	
2010	26,184	23,371	135	1,694	463	212	233	77	
2012	27,871	26,056	235	600	302	81	513	85	
2014	27,953	26,058	268	614	320	85	521	87	
2016	27,955	25,981	302	628	338	89	528	89	
2018	28,059	25,997	341	642	357	94	537	91	
2020	28,088	25,940	380	655	378	98	544	93	
2022	28,066	25,834	417	666	401	103	551	95	
2024	28,076	25,751	454	678	426	108	562	97	
2026	28,045	25,629	490	690	451	114	571	99	
% change	0.3	-3.0	255.1	29.5	88.7	75.4	16.5	28.6	
Household Composition - 2 people									
	Total	White	Mixed	Indian	Pakistani	Bangladeshi / other Asian	Black	Chinese / other	
2004	25,656	23,200	94	1,511	380	177	226	68	
2006	25,748	23,183	104	1,570	406	187	227	71	
2008	25,952	23,270	118	1,629	433	199	230	73	
2010	26,184	23,371	135	1,694	463	212	233	77	
2012	26,358	23,413	155	1,755	494	225	237	80	
2014	26,660	23,572	178	1,816	530	239	243	84	
2016	26,796	23,568	202	1,871	566	253	248	87	
2018	27,088	23,705	230	1,930	608	269	256	91	
2020	27,295	23,754	260	1,985	654	284	263	95	
2022	27,482	23,777	292	2,038	704	301	271	99	
2024	27,718	23,832	325	2,094	763	321	281	103	
2026	27,954	23,877	360	2,149	827	343	291	107	
% change	9.0	2.9	283.0	42.2	117.6	93.8	28.8	57.4	
Household Composition - 3 or more people									
	Total	White	Mixed	Indian	Pakistani	Bangladeshi / other Asian	Black	Chinese / others	
2004	49,929	43,244	278	2,906	1,927	701	677	196	
2006	49,789	42,816	314	2,990	2,050	738	679	202	
2008	49,822	42,556	361	3,063	2,173	779	687	204	
2010	49,892	42,307	414	3,141	2,301	825	696	208	
2012	50,002	42,099	477	3,211	2,430	867	706	212	
2014	50,162	41,947	543	3,270	2,561	911	715	216	
2016	50,290	41,756	611	3,329	2,697	955	723	219	
2018	50,531	41,660	686	3,384	2,847	1,000	732	222	
2020	50,675	41,468	762	3,434	3,005	1,044	737	225	
2022	50,712	41,177	831	3,475	3,168	1,090	743	228	
2024	50,816	40,914	897	3,522	3,356	1,144	752	230	
2026	50,809	40,563	958	3,560	3,538	1,197	760	232	
% change	1.8	-6.2	244.6	22.5	83.6	70.8	12.3	18.4	

3.4 Household Projection for Wolverhampton

The population growth of 2,800 predicted for Wolverhampton is expected to translate into formation of an additional 7,100 households. Households headed by White ethnic groups are expected to fall by 4,850.

Indian groups are expected to account for nearly 55% of additional demand (3,850 households) in Wolverhampton. Pakistani and Bangladeshi / other Asian groups will cumulatively account for over 45% of total additional housing demand (3,350 households). Households with mixed ethnicity heads of household will account for nearly 40% of total household growth (2,800 households).

Notably, the number of one person mixed ethnicity, Pakistani and Bangladeshi households will increase substantially in Wolverhampton over the period to 2026. However, these households will still only make up 2% of the total in 2026.

Table 16: Household Change to 2026, Wolverhampton (ethnicity of HRP) – Constant Household Size

	ALL	White	Mixed	Indian	Pakistani	Bangladeshi / other Asian	Black	Chinese / other
2004	101,450	81,600	1,150	11,500	1,100	950	4,700	600
2006	102,300	81,250	1,300	12,050	1,300	1,150	4,800	650
2008	102,500	80,350	1,500	12,450	1,400	1,250	4,950	700
2010	103,300	80,050	1,700	12,900	1,550	1,400	5,050	750
2012	103,850	79,550	1,950	13,250	1,700	1,500	5,200	800
2014	104,550	79,200	2,250	13,600	1,850	1,650	5,300	850
2016	105,500	79,050	2,550	13,950	2,000	1,750	5,450	900
2018	106,150	78,650	2,850	14,250	2,150	1,900	5,600	950
2020	106,950	78,350	3,150	14,550	2,350	2,050	5,700	950
2022	107,600	77,950	3,400	14,850	2,550	2,150	5,850	1,000
2024	108,150	77,400	3,650	15,100	2,750	2,300	6,000	1,050
2026	108,550	76,750	3,950	15,350	2,950	2,450	6,150	1,100

Table 17: Household Composition to 2026, Wolverhampton (ethnicity of HRP) – Constant Household Size

Household Composition - 1 person								
	Total	White	Mixed	Indian	Pakistani	Bangladeshi / other Asian	Black	Chinese / other
2004	31,380	27,334	377	1,405	129	164	1,857	116
2006	31,484	27,206	429	1,471	148	193	1,907	132
2008	31,401	26,910	495	1,521	164	216	1,952	143
2010	26,113	17,095	406	6,616	150	240	1,475	131
2012	31,596	26,647	656	1,620	197	260	2,054	164
2014	31,699	26,516	749	1,662	214	281	2,106	172
2016	31,894	26,469	844	1,705	231	303	2,162	179
2018	32,000	26,338	946	1,743	251	325	2,210	187
2020	32,145	26,243	1,047	1,780	272	347	2,260	194
2022	32,244	26,106	1,139	1,815	295	371	2,315	202
2024	32,304	25,926	1,226	1,847	321	397	2,376	211
2026	32,318	25,706	1,312	1,875	347	424	2,433	220
% change	3.0	-6.0	248.0	33.5	169.0	158.5	31.0	89.7
Household Composition - 2 people								
	Total	White	Mixed	Indian	Pakistani	Bangladeshi / other Asian	Black	Chinese / other
2004	25,202	17,274	269	5,936	106	158	1,365	94
2006	25,558	17,228	305	6,205	122	188	1,402	108
2008	25,748	17,089	352	6,402	136	214	1,437	119
2010	26,113	17,095	406	6,616	150	240	1,475	131
2012	26,396	17,058	466	6,786	165	267	1,512	141
2014	26,719	17,066	532	6,942	182	295	1,550	151
2016	27,112	17,132	600	7,103	201	325	1,590	162
2018	27,421	17,135	673	7,239	223	356	1,622	173
2020	27,753	17,156	746	7,375	248	388	1,656	185
2022	28,073	17,175	813	7,497	277	422	1,692	198
2024	28,365	17,166	877	7,609	309	460	1,731	212
2026	28,644	17,160	940	7,702	346	499	1,768	229
% change	13.7	-0.7	249.4	29.8	226.4	215.8	29.5	143.6
Household Composition - 3 or more people								
	Total	White	Mixed	Indian	Pakistani	Bangladeshi / other Asian	Black	Chinese / others
2004	44,864	36,984	475	4,128	858	622	1,448	349
2006	45,248	36,776	540	4,330	987	730	1,487	397
2008	45,304	36,328	623	4,490	1,096	814	1,522	430
2010	45,624	36,115	720	4,667	1,201	895	1,562	463
2012	45,846	35,835	827	4,817	1,307	971	1,600	487
2014	46,086	35,569	945	4,962	1,417	1,045	1,642	507
2016	46,448	35,410	1,065	5,111	1,531	1,120	1,687	525
2018	46,703	35,146	1,192	5,245	1,655	1,195	1,727	543
2020	47,023	34,937	1,319	5,378	1,792	1,269	1,770	559
2022	47,260	34,645	1,434	5,504	1,936	1,348	1,817	576
2024	47,456	34,297	1,542	5,621	2,096	1,435	1,869	597
2026	47,555	33,867	1,648	5,730	2,255	1,520	1,920	615
% change	6.0	-8.4	246.9	38.8	162.8	144.4	32.6	76.2

4. Household Forecast - Scenario Two

This section summarises the implications - in terms of future housing demand - of the re-grossed ONS projection, with an ethnic group component for scenario two (decreasing household sizes).

3.1 Household Projection for Dudley

Under scenario two HDAM predicts that the population growth of 6,200 over the period 2004 – 2026 will translate into an additional 13,600 households. Households headed by White ethnic groups are expected to account for 55% (7,500) of this additional demand due to a significantly increasing number of one and two person households over the period (see Table xx overleaf).

Under this scenario Pakistani and Bangladeshi / other Asian groups will cumulatively account for around a fifth of additional housing demand (2,900 households) in Dudley. The Indian community is predicted to account for 7% (950) of the overall additional households expected to form over the forecast period.

Table 18: Household Change to 2026, Dudley (ethnicity of HRP) – Decreasing Household Size

	ALL	White	Mixed	Indian	Pakistani	Bangladeshi / other Asian	Black	Chinese / other
2004	128,150	122,000	500	1,850	1,800	450	1,250	450
2006	129,050	122,450	550	1,950	2,000	500	1,350	450
2008	129,950	122,900	650	2,050	2,150	550	1,350	500
2010	131,100	123,550	750	2,100	2,300	600	1,400	500
2012	132,600	124,500	850	2,200	2,500	650	1,450	550
2014	134,250	125,650	1,000	2,300	2,650	700	1,500	600
2016	135,600	126,450	1,100	2,400	2,850	750	1,550	600
2018	137,450	127,700	1,250	2,500	3,050	800	1,600	650
2020	138,700	128,400	1,400	2,550	3,300	900	1,650	650
2022	139,850	128,950	1,550	2,650	3,500	950	1,700	700
2024	140,750	129,200	1,700	2,700	3,750	1,000	1,800	750
2026	141,750	129,500	1,850	2,800	4,050	1,100	1,850	750

Table 19: Household Composition to 2026, Dudley (ethnicity of HRP) – Decreasing Household Size

Household Composition - 1 person								
	Total	White	Mixed	Indian	Pakistani	Bangladeshi / other Asian	Black	Chinese / other
2004	34,502	33,456	140	230	160	49	407	59
2006	34,700	33,579	158	244	176	56	424	63
2008	34,886	33,693	180	256	191	62	437	68
2010	35,156	33,884	207	268	207	67	452	72
2012	35,505	34,144	240	280	222	74	468	77
2014	35,909	34,456	276	292	239	81	485	81
2016	36,216	34,667	315	303	256	88	502	86
2018	36,668	35,020	356	314	274	95	519	90
2020	36,951	35,203	399	324	293	102	535	94
2022	37,212	35,359	442	334	314	110	553	99
2024	37,392	35,433	485	344	337	119	571	104
2026	37,585	35,514	530	354	361	127	590	108
% change	+8.9	+6.2	+278.6	+53.9	+125.6	+159.2	+45.0	+83.1
Household Composition - 2 people								
	Total	White	Mixed	Indian	Pakistani	Bangladeshi / other Asian	Black	Chinese / other
2004	37,212	36,260	79	305	206	41	227	94
2006	37,501	36,476	89	328	223	48	237	102
2008	37,883	36,781	100	351	242	53	245	111
2010	38,358	37,169	114	377	264	59	254	121
2012	38,901	37,613	132	404	289	66	264	133
2014	39,536	38,141	152	432	318	73	276	145
2016	40,003	38,498	173	460	347	80	288	157
2018	40,657	39,032	196	489	380	87	302	170
2020	41,074	39,329	220	516	415	95	316	184
2022	41,481	39,607	245	543	454	102	332	198
2024	41,844	39,830	271	571	499	111	350	213
2026	42,248	40,082	298	601	549	120	369	229
% change	+13.5	+10.5	+277.2	+97.0	+166.5	+192.7	+62.6	+143.6
Household Composition - 3 or more people								
	Total	White	Mixed	Indian	Pakistani	Bangladeshi / other Asian	Black	Chinese / others
2004	56,394	52,273	265	1,267	1,406	317	615	252
2006	56,844	52,380	300	1,340	1,553	361	640	270
2008	57,140	52,378	342	1,397	1,681	396	659	287
2010	57,576	52,496	393	1,454	1,819	431	680	303
2012	58,156	52,739	456	1,510	1,954	475	703	320
2014	58,790	53,037	526	1,560	2,090	518	726	333
2016	59,336	53,238	600	1,609	2,231	562	749	347
2018	60,090	53,638	677	1,656	2,381	608	770	359
2020	60,639	53,826	758	1,699	2,542	653	790	371
2022	61,153	53,961	839	1,740	2,715	702	811	384
2024	61,511	53,932	920	1,778	2,900	755	830	396
2026	61,874	53,897	1,002	1,815	3,090	811	850	409
% change	+9.7	+3.1	+278.1	+43.3	+119.8	+155.8	+38.2	+62.3

3.2 Household Projection for Sandwell

The population growth of 11,100 over the forecast period predicted for Sandwell is expected to translate into formation of an additional 11,650 households under scenario two. Households headed by White ethnic groups are expected to fall by 1,700 in Sandwell over the period to 2026. In spite of falling household sizes, one person White households are all expected to decline in actual terms and as a proportion of the total households in the borough (see Table xx overleaf).

Pakistani and Bangladeshi / other Asian groups will cumulatively account for over 42% of additional housing demand (4,850 households) in Sandwell. Indian groups will account for 36% of additional demand (4,150 households), and mixed ethnicity will account for 23% (2,650 households).

Table 20: Household Change to 2026, Sandwell (ethnicity of HRP) – Decreasing Household Size

	ALL	White	Mixed	Indian	Pakistani	Bangladeshi / other Asian	Black	Chinese / other
2004	120,150	100,100	1,050	9,800	2,500	1,800	4,500	450
2006	120,450	99,350	1,200	10,300	2,700	1,950	4,600	500
2008	121,100	98,900	1,350	10,700	2,950	2,100	4,750	500
2010	122,150	98,750	1,550	11,150	3,200	2,250	4,850	550
2012	123,100	98,500	1,800	11,550	3,450	2,400	4,950	550
2014	124,150	98,400	2,050	11,950	3,700	2,550	5,100	600
2016	125,700	98,700	2,300	12,350	3,950	2,700	5,250	600
2018	127,100	98,900	2,600	12,650	4,250	2,900	5,400	600
2020	128,300	98,800	2,900	13,000	4,500	3,050	5,500	650
2022	129,500	98,700	3,200	13,350	4,800	3,250	5,650	650
2024	130,850	98,750	3,450	13,650	5,150	3,500	5,800	700
2026	131,800	98,400	3,700	13,950	5,450	3,700	5,950	700

Table 21: Household Composition to 2026, Sandwell (ethnicity of HRP) – Decreasing Household Size

Household Composition - 1 person								
	Total	White	Mixed	Indian	Pakistani	Bangladeshi / other Asian	Black	Chinese / other
2004	35,836	32,161	277	1,194	259	193	1,632	120
2006	35,758	31,919	310	1,250	281	208	1,663	127
2008	35,808	31,781	355	1,302	305	224	1,706	135
2010	35,959	31,730	408	1,357	331	240	1,751	142
2012	36,084	31,653	468	1,407	357	256	1,796	148
2014	36,259	31,620	535	1,452	382	273	1,843	154
2016	36,570	31,705	607	1,500	410	290	1,897	160
2018	36,848	31,768	681	1,542	439	309	1,942	167
2020	37,048	31,749	760	1,583	468	328	1,986	173
2022	37,249	31,718	838	1,624	500	350	2,039	180
2024	37,492	31,723	912	1,664	534	374	2,098	187
2026	37,611	31,616	984	1,699	568	398	2,153	194
% change	+5.0	-1.7	+255.2	+42.3	+119.3	+106.2	+31.9	+61.7
Household Composition - 2 people								
	Total	White	Mixed	Indian	Pakistani	Bangladeshi / other Asian	Black	Chinese / other
2004	30,407	22,900	343	4,617	374	537	1,544	91
2006	30,571	22,707	384	4,827	405	578	1,574	97
2008	30,863	22,624	440	5,020	439	622	1,615	103
2010	31,246	22,608	505	5,222	477	668	1,657	109
2012	31,595	22,569	579	5,406	514	713	1,699	114
2014	31,976	22,573	661	5,566	554	760	1,742	120
2016	32,469	22,658	747	5,738	597	811	1,791	126
2018	32,927	22,739	835	5,882	644	865	1,830	132
2020	33,335	22,763	928	6,025	693	921	1,867	138
2022	33,763	22,792	1,017	6,167	747	985	1,911	144
2024	34,285	22,910	1,098	6,299	809	1,057	1,960	152
2026	34,703	22,950	1,175	6,412	873	1,131	2,003	159
% change	+14.1	+0.2	+242.6	+38.9	+133.4	+110.6	+29.7	+74.7
Household Composition - 3 or more people								
	Total	White	Mixed	Indian	Pakistani	Bangladeshi / other Asian	Black	Chinese / others
2004	53,867	45,016	423	3,986	1,845	1,059	1,321	217
2006	54,072	44,698	471	4,175	2,009	1,141	1,347	231
2008	54,420	44,491	540	4,357	2,180	1,227	1,382	244
2010	54,927	44,399	620	4,550	2,366	1,318	1,418	257
2012	55,389	44,274	712	4,731	2,546	1,405	1,454	267
2014	55,903	44,201	816	4,894	2,726	1,495	1,494	277
2016	56,629	44,295	928	5,070	2,917	1,591	1,540	288
2018	57,307	44,347	1,045	5,224	3,120	1,692	1,580	298
2020	57,879	44,284	1,170	5,378	3,323	1,794	1,621	309
2022	58,458	44,189	1,296	5,533	3,543	1,908	1,669	320
2024	59,049	44,082	1,418	5,687	3,774	2,032	1,725	331
2026	59,459	43,816	1,540	5,825	4,003	2,157	1,777	342
% change	+10.4	-2.7	+264.1	+46.1	+117.0	+103.7	+34.5	+57.6

3.3 Household Projection for Walsall

Under scenario two the population decline of 3,800 predicted for Walsall is expected to translate into formation of an additional 5,650 households. Due to decreasing house hold sizes, households headed by White ethnic groups are expected to fall by 800.

Pakistani and Bangladeshi / other Asian groups will cumulatively account for r 55% of total additional housing demand (3,100 households) in Walsall under this scenario. Indian groups will account for over 28% of additional demand (1,600 households). Households with mixed ethnicity heads of household will account for 24% of household growth (1,300 households).

Table 22: Household Change to 2026, Walsall (ethnicity of HRP) – Decreasing Household Size

	ALL	White	Mixed	Indian	Pakistani	Bangladeshi / other Asian	Black	Chinese / other
2004	103,800	93,100	550	5,000	2,600	950	1,400	350
2006	103,850	92,650	600	5,150	2,750	1,000	1,450	400
2008	104,250	92,600	700	5,300	2,900	1,100	1,450	400
2010	104,800	92,550	800	5,500	3,100	1,150	1,450	400
2012	105,300	92,500	900	5,650	3,300	1,200	1,500	400
2014	106,050	92,700	1,050	5,800	3,500	1,250	1,500	400
2016	106,550	92,600	1,150	5,950	3,700	1,350	1,550	450
2018	107,400	92,850	1,300	6,100	3,900	1,400	1,550	450
2020	108,000	92,850	1,450	6,200	4,150	1,500	1,600	450
2022	108,450	92,650	1,600	6,350	4,400	1,550	1,600	450
2024	109,000	92,550	1,750	6,450	4,650	1,650	1,650	450
2026	109,450	92,300	1,900	6,600	4,950	1,700	1,700	450

Table 23: Household Composition to 2026, Walsall (ethnicity of HRP) – Decreasing Household Size

Household Composition - 1 person								
	Total	White	Mixed	Indian	Pakistani	Bangladeshi / other Asian	Black	Chinese / other
2004	28,025	26,479	139	535	239	65	491	77
2006	27,961	26,354	156	553	255	69	495	80
2008	28,013	26,338	179	570	271	73	501	82
2010	28,084	26,331	206	589	288	77	509	84
2012	28,151	26,317	237	606	306	81	518	86
2014	28,290	26,372	271	622	324	86	527	88
2016	28,349	26,347	306	637	342	91	535	91
2018	28,511	26,416	346	652	363	95	546	93
2020	28,598	26,411	387	666	385	100	553	95
2022	28,633	26,355	426	679	409	105	562	97
2024	28,701	26,323	464	693	435	111	574	99
2026	28,726	26,252	502	706	462	117	585	101
% change	+2.5	-0.9	+261.2	+32.0	+93.3	+80.0	+19.1	+31.2
Household Composition - 2 people								
	Total	White	Mixed	Indian	Pakistani	Bangladeshi / other Asian	Black	Chinese / other
2004	25,707	23,246	94	1,514	381	177	226	68
2006	25,851	23,276	104	1,577	407	188	228	71
2008	26,108	23,410	119	1,639	435	200	231	74
2010	26,394	23,558	136	1,707	467	214	235	77
2012	26,623	23,648	156	1,772	499	227	239	81
2014	26,981	23,856	180	1,837	536	242	246	85
2016	27,173	23,900	205	1,898	574	257	252	88
2018	27,525	24,087	234	1,961	618	273	260	92
2020	27,790	24,185	265	2,021	666	289	267	96
2022	28,037	24,257	297	2,079	718	308	276	101
2024	28,335	24,362	332	2,141	780	329	287	105
2026	28,633	24,457	369	2,202	847	351	299	110
% change	+11.4	+5.2	+292.6	+45.4	+122.3	+98.3	+32.3	+61.8
Household Composition - 3 or more people								
	Total	White	Mixed	Indian	Pakistani	Bangladeshi / other Asian	Black	Chinese / others
2004	50,029	43,331	279	2,911	1,931	703	678	196
2006	49,988	42,988	315	3,002	2,059	741	682	202
2008	50,122	42,812	363	3,081	2,186	783	691	206
2010	50,292	42,646	418	3,166	2,320	831	702	210
2012	50,505	42,522	482	3,243	2,454	876	713	214
2014	50,767	42,453	550	3,310	2,592	922	724	218
2016	50,999	42,344	619	3,376	2,735	969	733	222
2018	51,345	42,332	697	3,438	2,893	1,016	744	226
2020	51,595	42,221	775	3,496	3,060	1,063	750	229
2022	51,736	42,009	847	3,545	3,232	1,112	758	232
2024	51,945	41,824	917	3,601	3,430	1,169	769	235
2026	52,042	41,548	982	3,647	3,623	1,227	778	238
% change	+4.0	-4.1	+252.0	+25.3	+87.6	+74.5	+14.7	+21.4

3.4 Household Projection for Wolverhampton

The population growth of 2,800 predicted for Wolverhampton is expected to translate into formation of an additional 9,550 households under scenario two. Households headed by White ethnic groups are expected to fall by 3,200.

Indian groups are expected to account for nearly 44% of additional demand (4,200 households) in Wolverhampton. Pakistani and Bangladeshi / other Asian groups will cumulatively account for over 37% of total additional housing demand (3,550 households). Households with mixed ethnicity heads of household will account for nearly 30% of total household growth (2,850 households).

Notably, the number of one person mixed ethnicity, Pakistani and Bangladeshi households will increase substantially in Wolverhampton over the period to 2006. However, even under the scenario of decreasing household sizes, these households will still only make up 6% of the total in 2026.

Table 24: Household Change to 2026, Wolverhampton (ethnicity of HRP) – Decreasing Household Size

	ALL	White	Mixed	Indian	Pakistani	Bangladeshi / other Asian	Black	Chinese / other
2004	101,650	81,800	1,150	11,500	1,100	950	4,700	600
2006	102,700	81,550	1,300	12,100	1,300	1,150	4,850	650
2008	103,100	80,850	1,500	12,500	1,450	1,300	4,950	700
2010	104,100	80,700	1,750	13,000	1,550	1,400	5,100	800
2012	104,900	80,350	2,000	13,400	1,700	1,550	5,250	850
2014	105,800	80,150	2,300	13,750	1,850	1,650	5,400	850
2016	106,950	80,150	2,550	14,150	2,000	1,800	5,550	900
2018	107,850	79,900	2,900	14,500	2,200	1,950	5,650	950
2020	108,900	79,800	3,200	14,800	2,400	2,050	5,800	1,000
2022	109,750	79,550	3,500	15,150	2,600	2,200	5,950	1,000
2024	110,550	79,150	3,750	15,450	2,800	2,350	6,150	1,050
2026	111,200	78,600	4,000	15,700	3,050	2,550	6,300	1,100

Table 25: Household Composition to 2026, Wolverhampton (ethnicity of HRP) – Decreasing Household Size

Household Composition - 1 person								
	Total	White	Mixed	Indian	Pakistani	Bangladeshi / other Asian	Black	Chinese / other
2004	31,443	27,388	378	1,408	129	164	1,860	116
2006	31,610	27,315	430	1,477	149	193	1,914	132
2008	31,590	27,072	498	1,530	165	217	1,964	144
2010	31,783	27,021	576	1,588	182	240	2,020	156
2012	31,914	26,914	662	1,636	199	262	2,074	166
2014	32,082	26,836	758	1,682	216	284	2,131	174
2016	32,343	26,842	856	1,729	235	307	2,193	182
2018	32,515	26,762	961	1,771	255	330	2,246	190
2020	32,728	26,720	1,066	1,813	277	354	2,301	197
2022	32,895	26,633	1,162	1,852	301	379	2,362	206
2024	33,023	26,502	1,254	1,888	328	406	2,428	216
2026	33,103	26,330	1,344	1,921	356	434	2,492	225
% change	+5.3	-3.9	+255.8	+36.4	+176.0	+164.6	+34.0	+94.6
Household Composition - 2 people								
	Total	White	Mixed	Indian	Pakistani	Bangladeshi / other Asian	Black	Chinese / other
2004	25,253	17,308	270	5,948	106	158	1,368	94
2006	25,660	17,297	307	6,230	122	189	1,408	108
2008	25,903	17,192	354	6,441	136	215	1,445	120
2010	26,323	17,232	409	6,669	151	242	1,487	132
2012	26,661	17,230	470	6,854	167	270	1,528	143
2014	27,042	17,272	539	7,026	184	299	1,569	153
2016	27,494	17,373	608	7,203	204	329	1,612	164
2018	27,863	17,411	684	7,356	227	362	1,649	176
2020	28,257	17,468	759	7,509	252	395	1,686	188
2022	28,640	17,522	829	7,648	282	431	1,726	202
2024	28,995	17,548	896	7,778	316	470	1,770	217
2026	29,340	17,577	963	7,889	355	511	1,811	234
% change	+16.2	+1.6	+257.3	+32.6	+234.8	+222.8	+32.3	+148.4
Household Composition - 3 or more people								
	Total	White	Mixed	Indian	Pakistani	Bangladeshi / other Asian	Black	Chinese / others
2004	44,954	37,058	475	4,136	859	623	1,451	350
2006	45,429	36,924	542	4,348	991	733	1,493	398
2008	45,576	36,547	627	4,517	1,102	819	1,531	433
2010	45,990	36,405	726	4,705	1,211	902	1,574	467
2012	46,306	36,195	836	4,866	1,320	981	1,616	492
2014	46,642	35,998	956	5,022	1,434	1,057	1,661	513
2016	47,103	35,908	1,080	5,184	1,552	1,136	1,711	532
2018	47,456	35,713	1,211	5,330	1,682	1,214	1,755	552
2020	47,876	35,571	1,342	5,475	1,825	1,292	1,802	569
2022	48,214	35,345	1,463	5,615	1,975	1,375	1,854	588
2024	48,511	35,059	1,576	5,746	2,142	1,467	1,911	610
2026	48,709	34,689	1,688	5,869	2,309	1,557	1,967	630
% change	+8.4	-6.4	+255.0	+41.9	+168.7	+149.8	+35.5	+80.2

5. Implications

The implications of the preceding sections are that:

- Across the four Black Country districts, ONS 2004-based subnational projections suggest that the period 2004 – 2026 will see the total population grow by around 16,500, and the BME population will grow from 16% to 22% of the population. Within this overall figure:
 - the population of Dudley is expected to increase by 6,200 to reach 310,900. The BME population is expected to account for 11% of the population of Dudley in 2026 compared to 7% in 2004;
 - the population of Sandwell is expected to increase by 11,100 to reach 297,200. The BME population is expected to account for 29% of the population of Sandwell in 2026 compared to 21% in 2004;
 - the population of Walsall is expected to fall by 3,800 to reach 249,400. The BME population is expected to account for 19% of the population of Walsall in 2026 compared to 14% in 2004; and
 - the population of Wolverhampton is expected to increase by 2,800 to reach 241,800. The BME population is expected to account for 32% of the population in 2026 compared to 24% in 2004.
- The White population is expected to decline in all areas, with Black and Minority Ethnic populations accounting for all additional population growth. South Asian groups – particularly Pakistani and Bangladeshi / other Asian - will drive this population growth, with more modest increases expected amongst the generally longer established Indian communities.
- ECOTEC's HDAM model predicts that the population growth will translate into formation of an additional 30,000 (scenario one) – 40,000 (scenario two) households over the period 2004 - 2026. This compares to the ONS 2004-based forecast of 55,000 households. This disparity is due to the larger household sizes predicted by HDAM, as a result of the ethnic group component of the model, of gradually decreasing household sizes across all ethnic groups under both scenarios.

Table 26: Household Projection 2004 - 2026, HDAM and ONS 2004-based Comparison (000's)

	2004			2006			2016			2026		
	ONS	HDAM SC1	HDAM SC2	ONS	HDAM SC1	HDAM SC2	ONS	HDAM SC1	HDAM SC2	ONS	HDAM SC1	HDAM SC2
Dudley	126	128	128	127	129	129	135	134	136	141	138	142
Sandwell	117	120	120	118	120	120	127	124	126	135	129	132
Walsall	102	104	104	103	103	104	107	105	107	110	107	109
Wolverhampton	99	101	102	100	102	103	107	106	107	113	109	111
Black Country	444	453	454	448	454	456	476	468	476	499	482	494

Source: HDAM and ONS (Crown Copyright 2006)

Table 27: Average Household Sizes 2004 - 2026, HDAM and ONS 2004-based Comparison

	2004			2006			2016			2026		
	ONS	HDAM SC1	HDAM SC2	ONS	HDAM SC1	HDAM SC2	ONS	HDAM SC1	HDAM SC2	ONS	HDAM SC1	HDAM SC2
Dudley	2.42	2.38	2.38	2.40	2.37	2.36	2.28	2.28	2.27	2.20	2.21	2.19
Sandwell	2.44	2.39	2.38	2.43	2.39	2.38	2.29	2.35	2.32	2.20	2.31	2.25
Walsall	2.48	2.45	2.44	2.45	2.45	2.43	2.34	2.40	2.35	2.27	2.36	2.28
Wolverhampton	2.41	2.35	2.35	2.40	2.35	2.33	2.24	2.26	2.24	2.14	2.20	2.17
Black Country	2.44	2.44	2.45	2.42	2.39	2.38	2.29	2.31	2.29	2.20	2.25	2.22

Source: HDAM and ONS (Crown Copyright 2006)

- Under both scenarios, in all areas apart from Dudley a subcomponent of household change will be a declining number of households headed by White ethnic groups. Moreover, Pakistani and Bangladeshi / other Asian headed households are expected to drive household growth, with Indian groups becoming less of an influence over time. By the end of the forecast period HDAM predicts that:
 - BME households will make up between 9% (11,900 – 12,250 households) of all households in Dudley compared to 5% (6,150 households) in 2004;
 - BME households will make up 25% (32,600 – 33,400 households) of all households in Sandwell compared to 17% (20,000 households) in 2004;
 - BME households will make up 16% (16,750 – 17,150 households) of all households in Walsall compared to 10% (10,700 households) in 2004; and
 - BME households will make up 29% (31,800 – 32,600 households) of all households in Wolverhampton compared to 20% (19,850 households) in 2004.
- Although, as per the ONS projections, HDAM does predict an increasing number of single person households in all areas, the model suggests that one person households will account for between just 14% - 18% of all household growth across the Black Country between 2004 and 2026. Growth in two person households is predicted to be potentially most influential – accounting for 40% - 45% of household growth. Overall, households containing three or more persons are expected to account for 40% - 42% of total household growth across the Black Country.

Annex One: ONS 2004-based Sub-regional Projections

**2004-based Sub-regional population projections
Black Country Districts**

		<i>thousands</i>									
		2004	2005	2006	2007	2008	2009	2014	2019	2024	2029
Dudley	Population	304.5	304.9	305.1	305.3	305.5	305.7	307.2	309.1	310.6	311.4
	Natural Change		0.3	0.2	0.2	0.2	0.2	0.2	0.2	0.0	-0.2
	All Migration net		0.1	0.0	0.0	0.0	0.1	0.1	0.2	0.2	0.3
Sandwell	Population	285.8	286.1	286.3	286.5	286.9	287.2	289.9	293.3	296.4	299.0
	Natural Change		0.8	0.8	0.8	0.8	0.9	1.1	1.2	1.1	1.0
	All Migration net		-0.5	-0.5	-0.5	-0.5	-0.5	-0.5	-0.5	-0.5	-0.5
Walsall	Population	252.8	252.6	252.3	252.0	251.7	251.4	250.6	250.2	249.8	249.2
	Natural Change		0.9	0.8	0.7	0.7	0.7	0.7	0.7	0.6	0.5
	All Migration net		-1.1	-1.1	-1.0	-1.0	-1.0	-0.8	-0.8	-0.7	-0.6
Wolverhampton	Population	239.1	239.3	239.3	239.3	239.2	239.2	239.5	240.5	241.5	242.3
	Natural Change		0.6	0.6	0.6	0.6	0.6	0.6	0.6	0.6	0.5
	All Migration net		-0.3	-0.5	-0.6	-0.6	-0.6	-0.5	-0.4	-0.4	-0.3

Figures may not sum due to rounding
Crown Copyright 2006

**2004-based Sub-regional household projections
Black Country Districts**

		<i>thousands</i>						
		2004	2006	2011	2016	2021	2026	2029
Dudley		126	127	131	135	138	141	143
Sandwell		117	118	122	127	131	135	137
Walsall		102	103	104	107	109	110	111
Wolverhampton		99	100	104	107	110	113	114

Figures may not sum due to rounding
Crown Copyright 2006