



SUSTAINABILITY APPRAISAL OF THE BLACK COUNTRY JOINT CORE STRATEGY

**Sustainability Appraisal Report to accompany the
Publication Version of the Joint Core Strategy**

Volume 3: Constraints Mapping

November 2009

This page is intentionally blank.

Contents

Section 1: Sub-regional sustainability constraints maps for the Black Country

Section 2: Sustainability constraints maps for the Regeneration Corridors and the Strategic Centres

This page is intentionally blank.

Section 1: Sub-regional sustainability constraints maps for the Black Country

Maps:

Rivers, canals and flood zones

Sites of Importance for Nature Conservation and Sites of Local Importance for Nature Conservation

Ancient woodland

Nature conservation assets

Unemployment variability

Index of Multiple Deprivation

Resident population density

Conservation areas and listed buildings

Special Areas of Conservation

National Nature Reserves and Local Nature Reserves

Community open space

Biodiversity Action Plan species distribution

Rivers, canals and flood zones in the Black Country

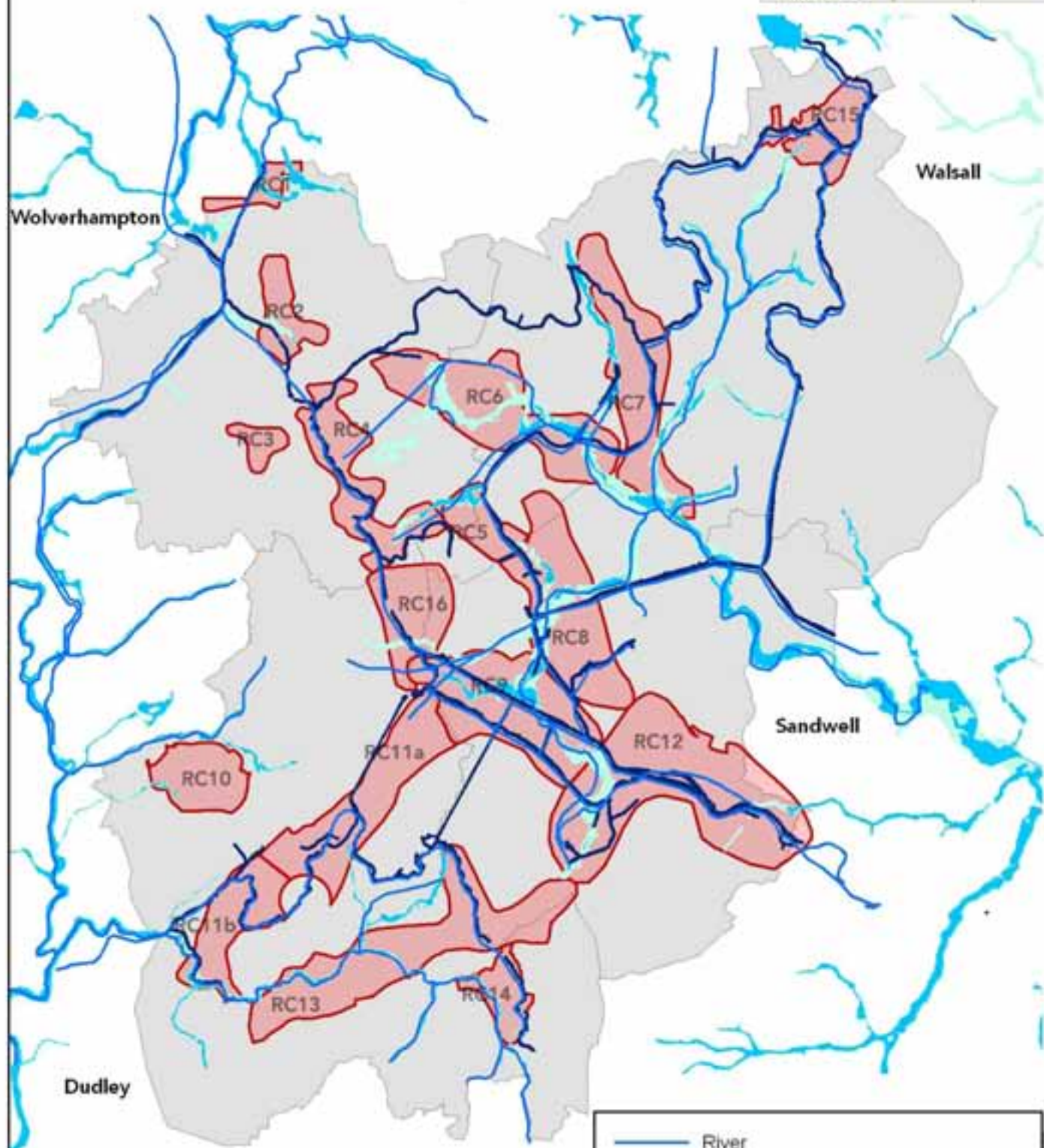
UE
ASSOCIATES
Eagle Tower,
Montpellier Drive,
Cheltenham, GL50 1TA
www.ue-a.co.uk

Scale
1:160,000

Date
Nov. 2009

Created by
HLG

Reviewed by
NACB



0 1,650 3,300 6,600 Metres

This map is reproduced from Ordnance Survey material with the permission of Ordnance Survey on behalf of Her Majesty's Stationery Office © Crown copyright. Unauthorised reproduction infringes Crown copyright and may lead to prosecution or civil proceedings. 100019537 / 100019566 / 100032119 / 100019529 (2007)



	River	
	Canal	
	Flood Zone 3	High risk with an annual probability of flooding of 1.0% or greater from rivers
	Flood Zone 2	Low to medium risk with an annual probability of flooding of 0.1 - 1.0% from rivers
	Corridor	
	Black Country UA Boundaries	

Sites of Importance for Nature Conservation and Sites of Local Importance for Nature Conservation in the Black Country

UE
ASSOCIATES
Eagle Tower,
Montpelier Drive,
Cheltenham, GL50 1TA
www.ue-a.co.uk

Scale
1:160,000

Date
Nov. 2009

Created by
HLG

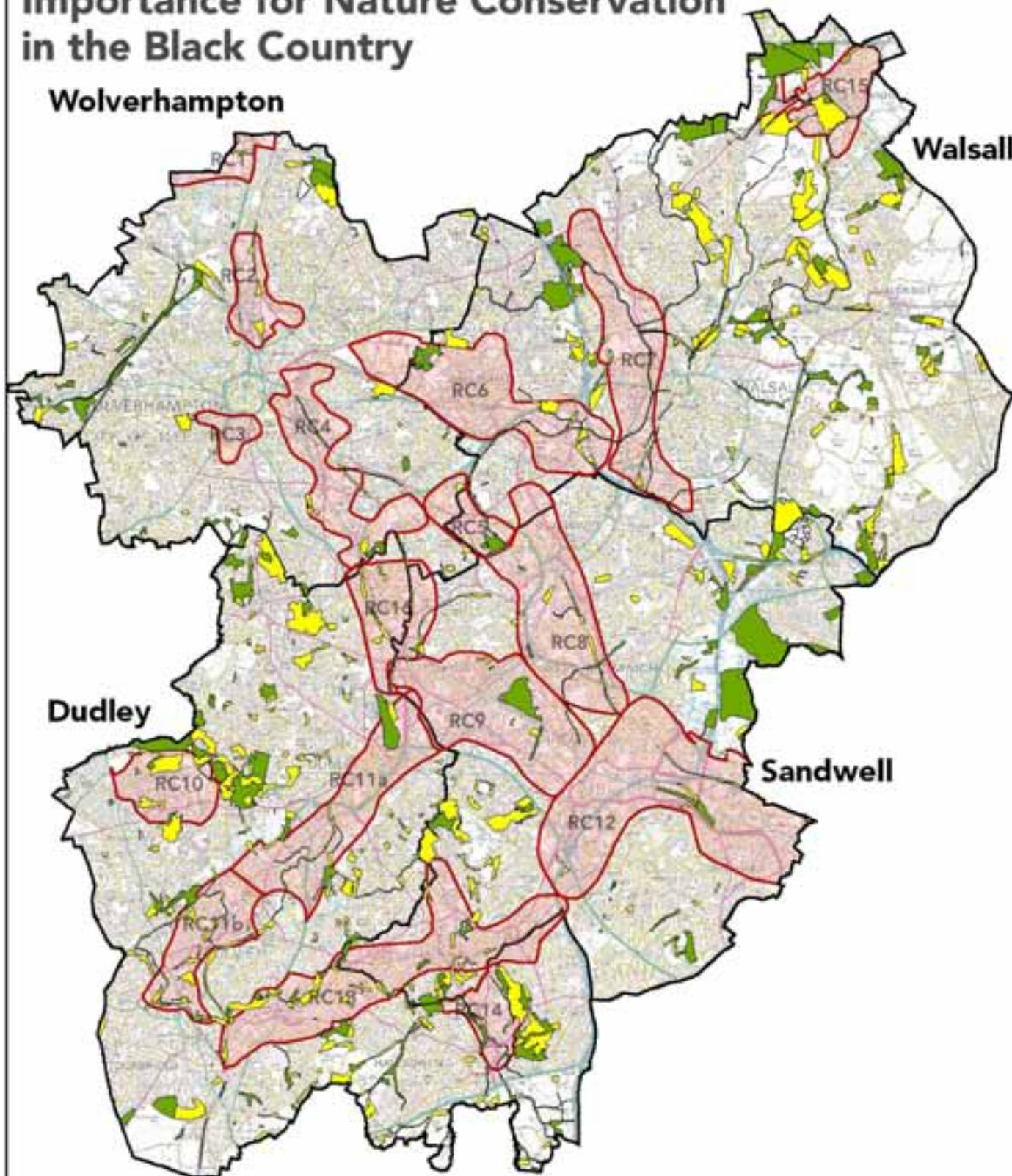
Reviewed by
NACB

Wolverhampton

Walsall

Dudley




Sandwell



0 1,625 3,250 6,500 Metres

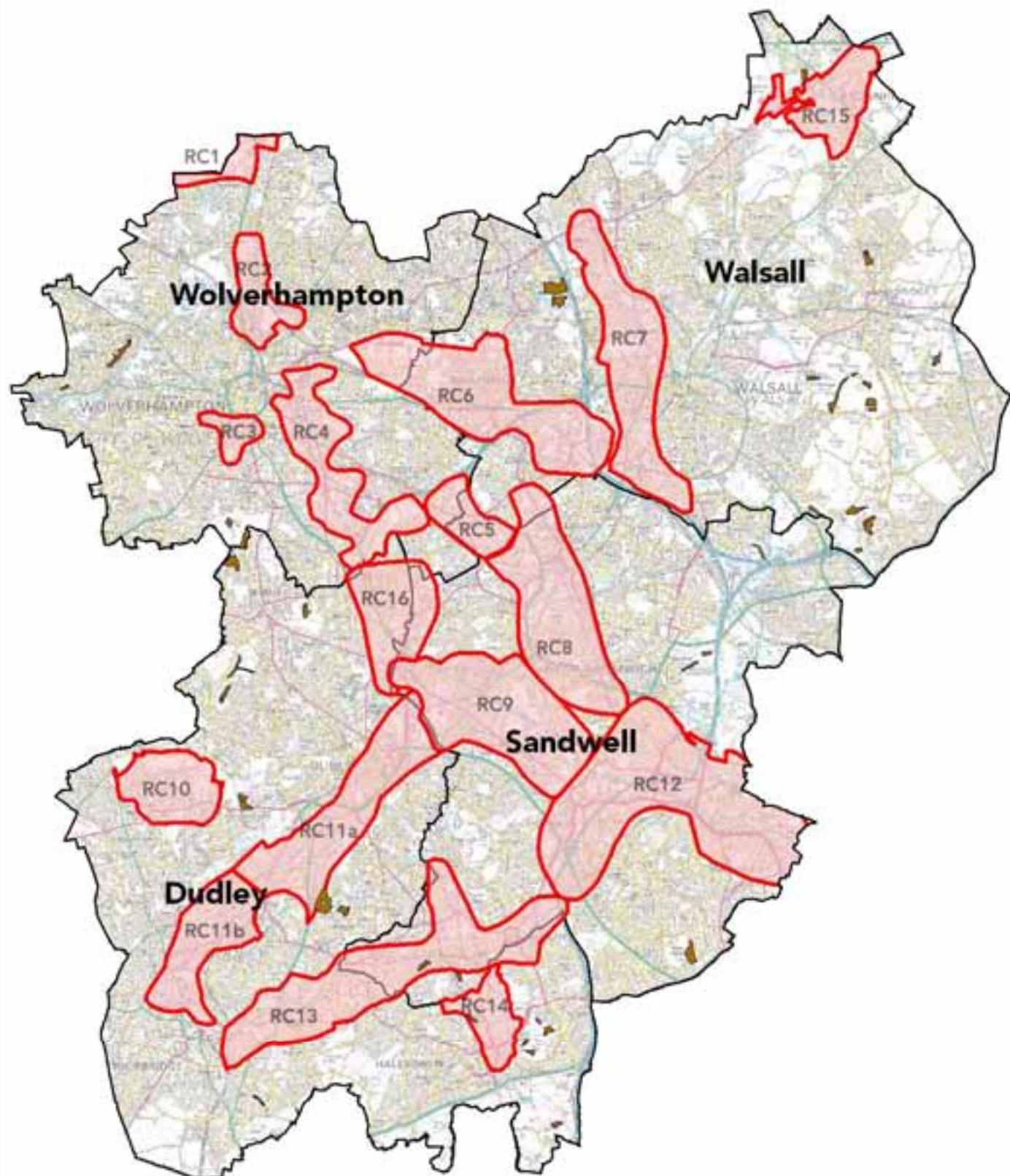
This map is reproduced from Ordnance Survey material with the permission of Ordnance Survey on behalf of Her Majesty's Stationery Office. © Crown copyright. Unauthorised reproduction infringes Crown copyright and may lead to prosecution or civil proceedings. 100019537 / 100019566 / 100032119 / 100019529 (2007)



-  Site of Importance for Nature Conservation
-  Site of Local Importance for Nature Conservation
-  Regeneration Corridors

Ancient woodland in the Black Country



 UNIVERSITY OF EAGLE TOWER, MOOTPOLLER DRIVE, CHALFHAM, GL50 1TA www.ue.ac.uk	Scale 1:160,500	Date Nov. 2009
	Created by HLG	Reviewed by NACB



0 1,750 3,500 7,000 Metres

This map is reproduced from Ordnance Survey material with the permission of Ordnance Survey on behalf of Her Majesty's Stationary Office © Crown copyright. Unauthorised reproduction infringes Crown copyright and may lead to prosecution or civil proceedings. 100019537 / 100019566 / 100032119 / 100019529 (2007)

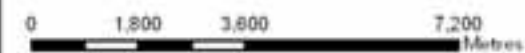
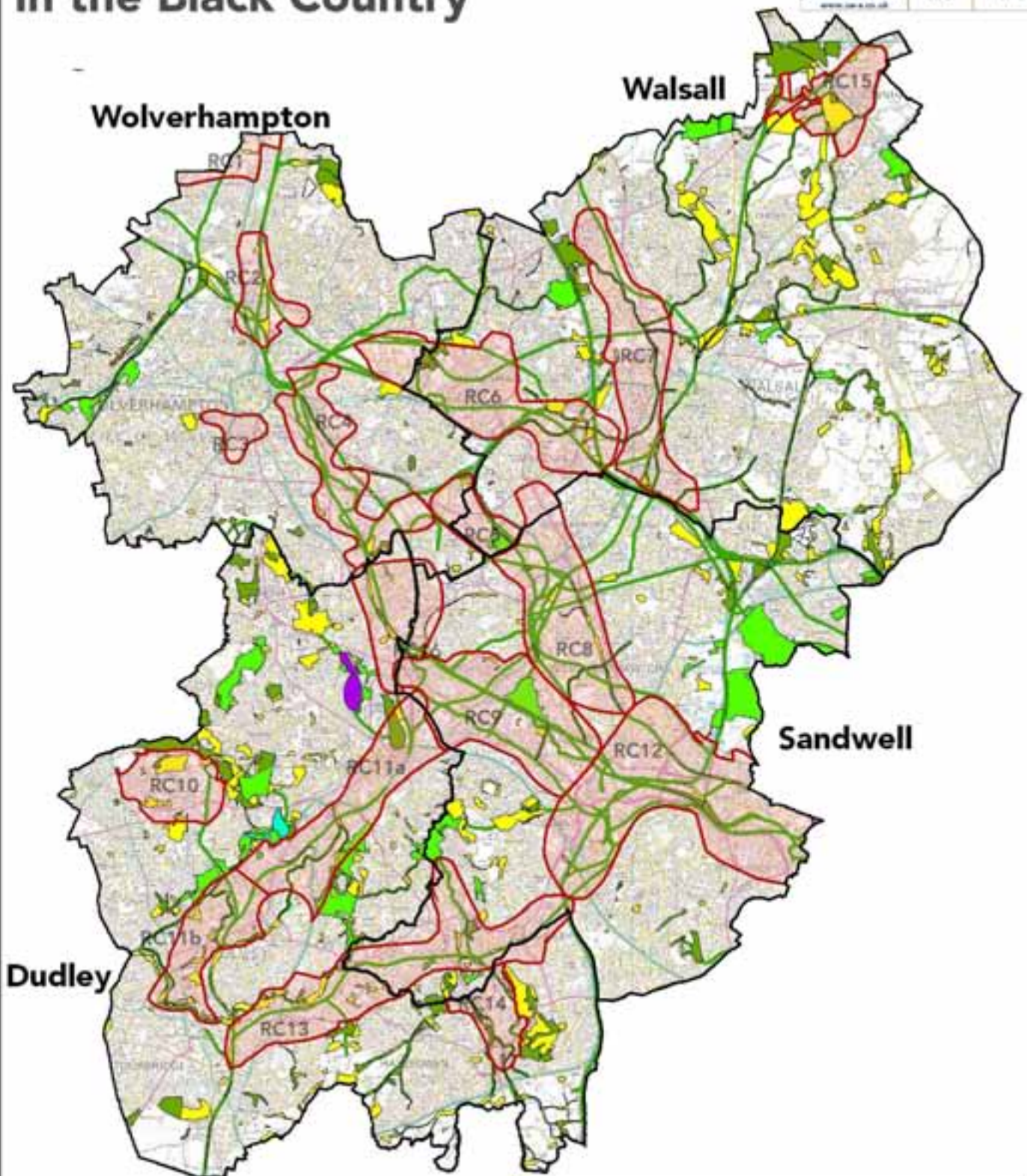


	Ancient Woodland
	Regeneration Corridor

Nature conservation assets in the Black Country



Scale 1:50,000	Date Nov. 2009
Created by HLC	Reviewed by HLC



This map is reproduced from Ordnance Survey material with the permission of Ordnance Survey on behalf of Her Majesty's Stationery Office © Crown copyright. Unauthorised reproduction infringes Crown copyright and may lead to prosecution or civil proceedings. 100019537 / 100019566 / 100032119 / 100019529 (2007)



- Corridors
- Special Area of Conservation
- National Nature Reserve
- Local Nature Reserve
- Site of Importance for Nature Conservation
- Site of Local Importance for Nature Conservation
- Ancient Woodland
- Wildlife Corridor

Unemployment variability in the Black Country

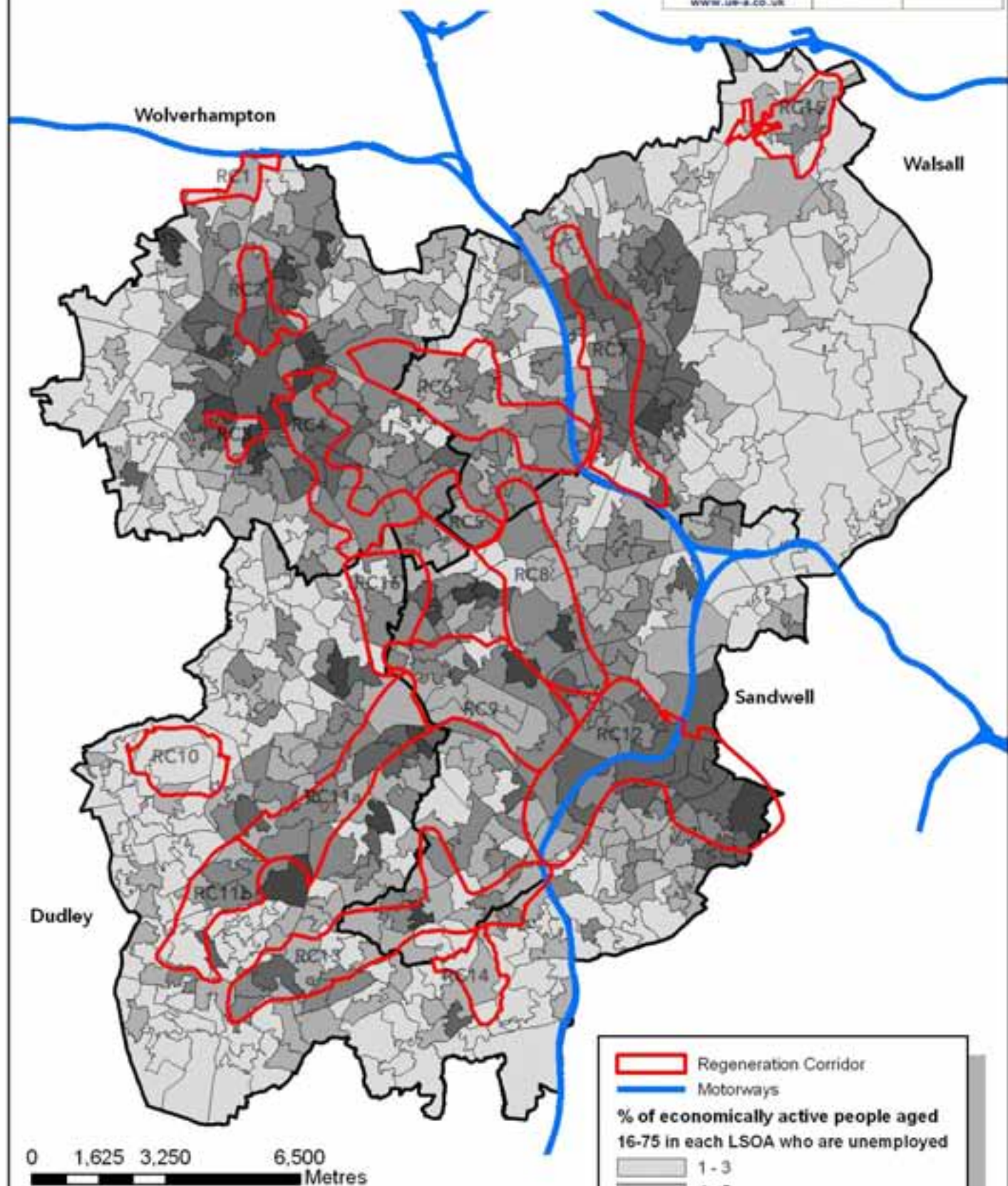
UE
 ASSOCIATED
 Eagle Tower,
 Montpellier Drive,
 Cheltenham, GL50 1TA
 www.ue-a.co.uk

Scale
 1:160,500

Date
 Nov, 2009

Created by
 HLG

Reviewed by
 NACB



Regeneration Corridor
 Motorways
% of economically active people aged 16-75 in each LSOA who are unemployed
 1 - 3
 4 - 5
 6 - 7
 8 - 9
 10 - 13

0 1,625 3,250 6,500 Metres

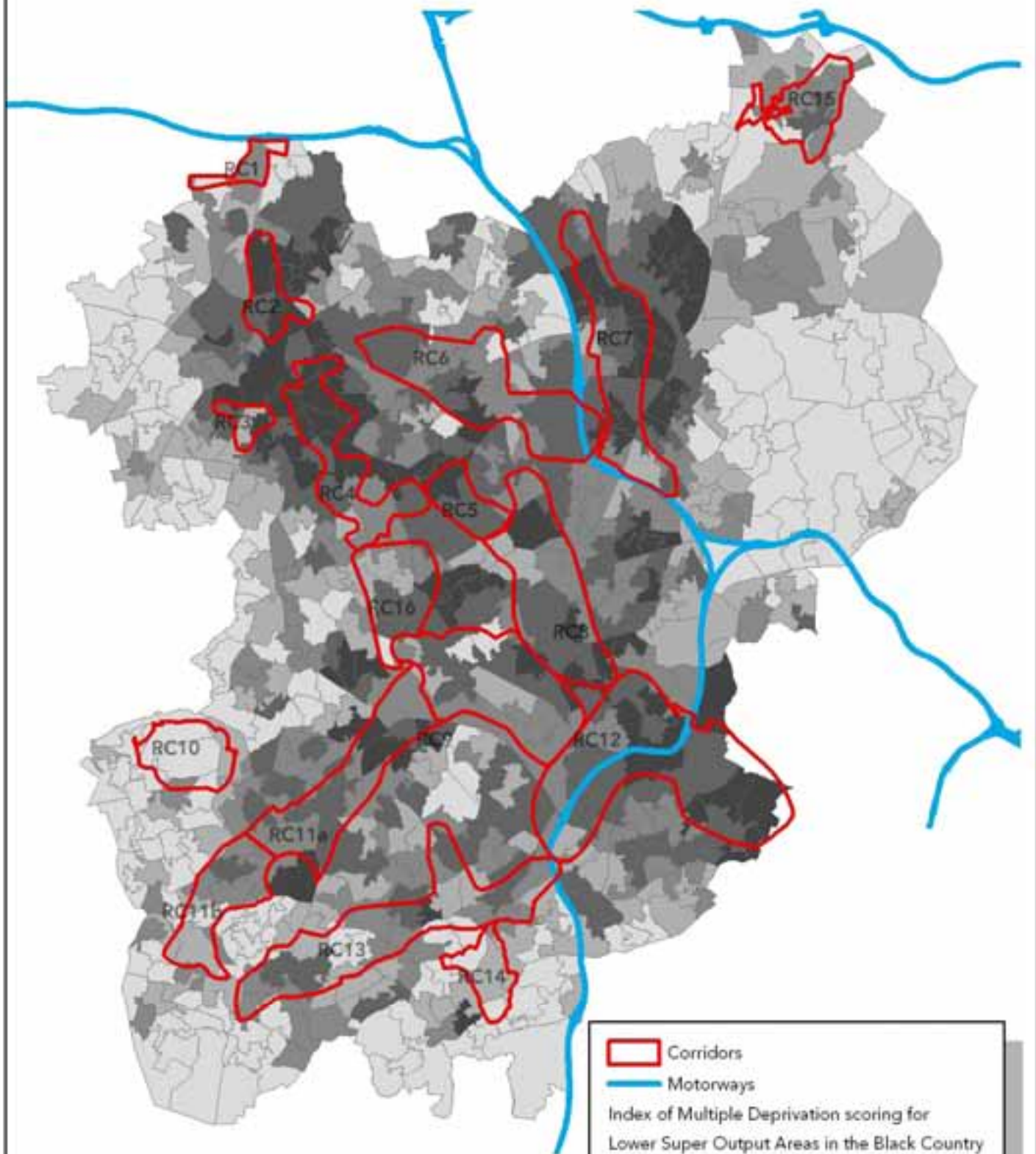
This map is reproduced from Ordnance Survey material with the permission of Ordnance Survey on behalf of Her Majesty's Stationery Office © Crown copyright. Unauthorised reproduction infringes Crown copyright and may lead to prosecution or civil proceedings. 100019537 / 100019566 / 100032119 / 100019529 (2007)



Index of Multiple Deprivation in the Black Country

UE
 ASSOCIATES
 Eagle Tower,
 Montpellier Drive,
 Cheltenham, GL50 1TA
 www.ue-a.co.uk

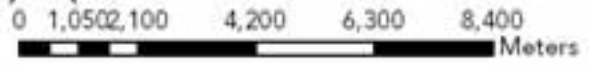
Scale 1:160,500	Date Nov. 2009
Created by HEG	Reviewed by NACB



	Corridors
	Motorways
Index of Multiple Deprivation scoring for Lower Super Output Areas in the Black Country	
	Least Deprived Quartile
	Most Deprived Quartile



This map is reproduced from Ordnance Survey material with the permission of Ordnance Survey on behalf of Her Majesty's Stationery Office © Crown copyright. Unauthorised reproduction infringes Crown copyright and may lead to prosecution or civil proceedings. 100019537 2007



Resident population density in the Black Country

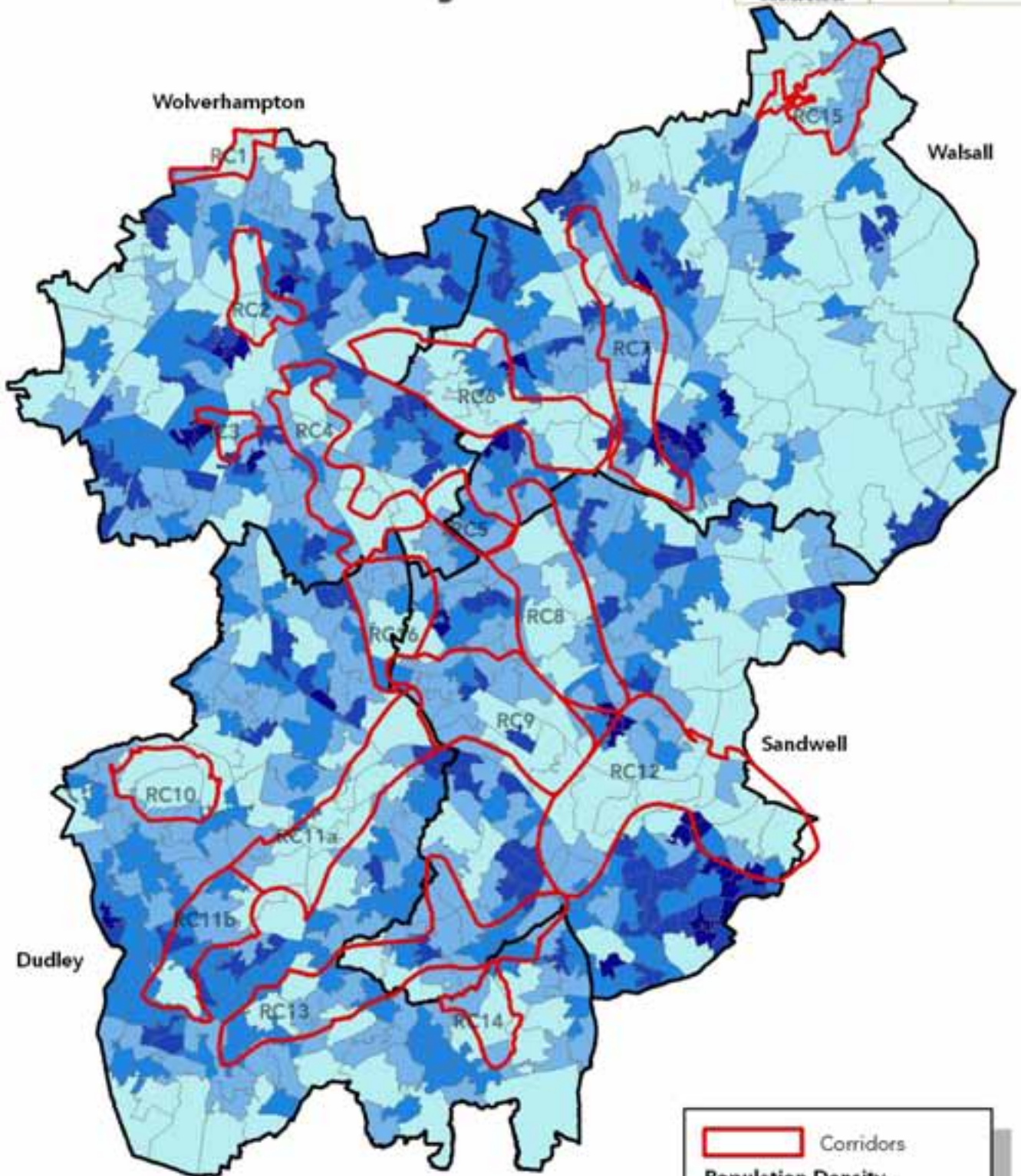
UE
 2007-2008
 Eagle Tower,
 Montpellier Drive,
 Cheltenham, GL50 1TA
 www.ue-a.co.uk

Scale
 1:160,500

Date
 Nov. 2009

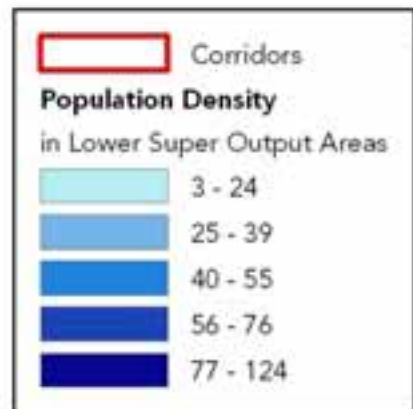
Created by
 HLG

Reviewed by
 NACB



0 1,750 3,500 7,000
 Metres

This map is reproduced from Ordnance Survey material with the permission of Ordnance Survey on behalf of Her Majesty's Stationery Office © Crown copyright. Unauthorised reproduction infringes Crown copyright and may lead to prosecution or civil proceedings. 100019537 / 100019566 / 100032119 / 100019529 (2007)



Conservation areas and listed buildings in the Black Country

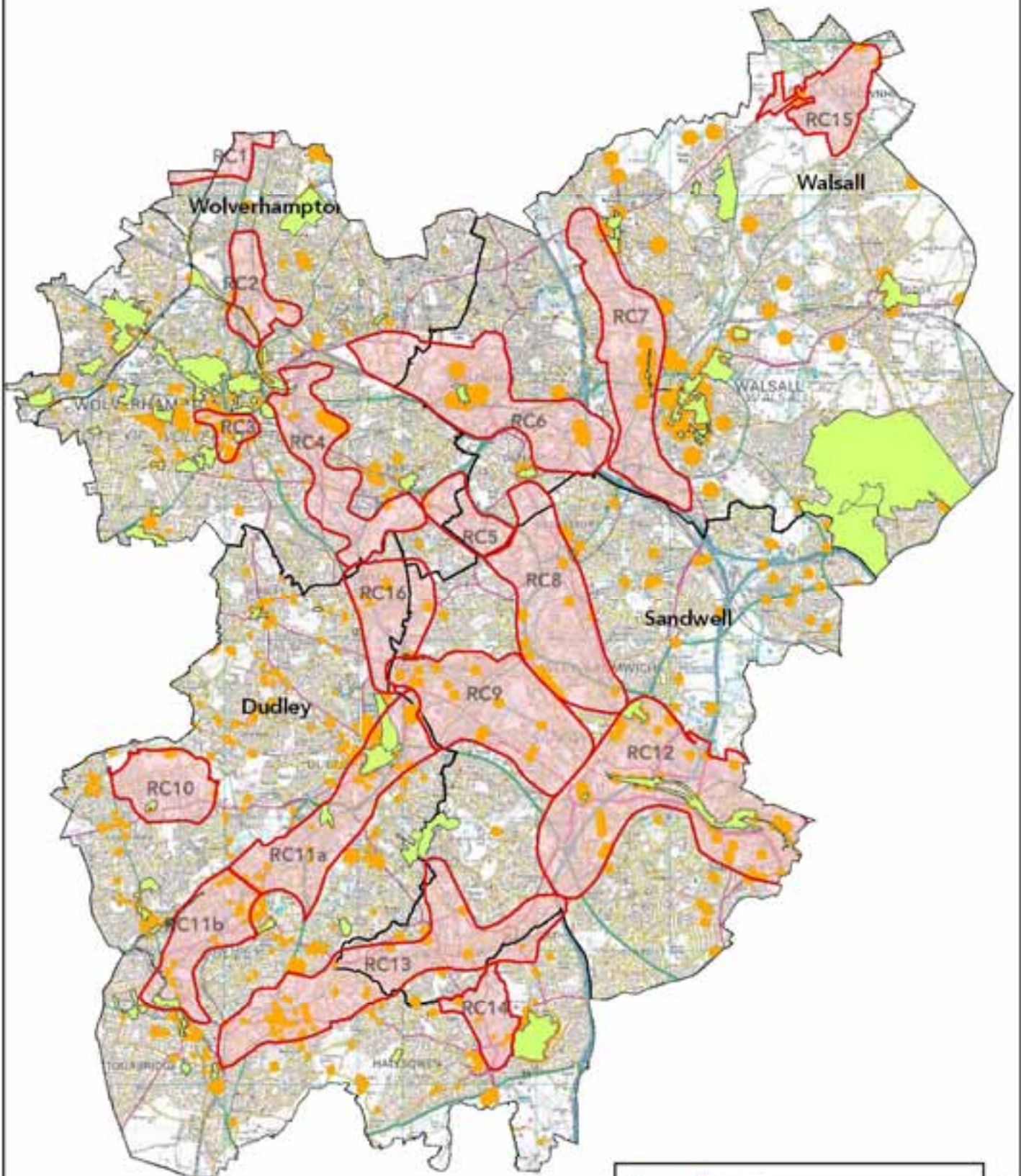
UE
ASSOCIATES
Eagle Tower,
Montpellier Drive,
Cheltenham, GL50 1TA
www.ue-a.co.uk

Scale
1:160,500

Date
Nov. 2009

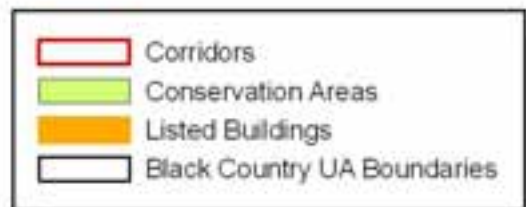
Created by
HLG

Reviewed by
NACB



0 1,650 3,300 6,600 Metres

This map is reproduced from Ordnance Survey material with the permission of Ordnance Survey on behalf of Her Majesty's Stationary Office © Crown copyright. Unauthorised reproduction infringes Crown copyright and may lead to prosecution or civil proceedings. 100019537 / 100019566 / 100032119 / 100019529 (2007)



Special Areas of Conservation in the Black Country



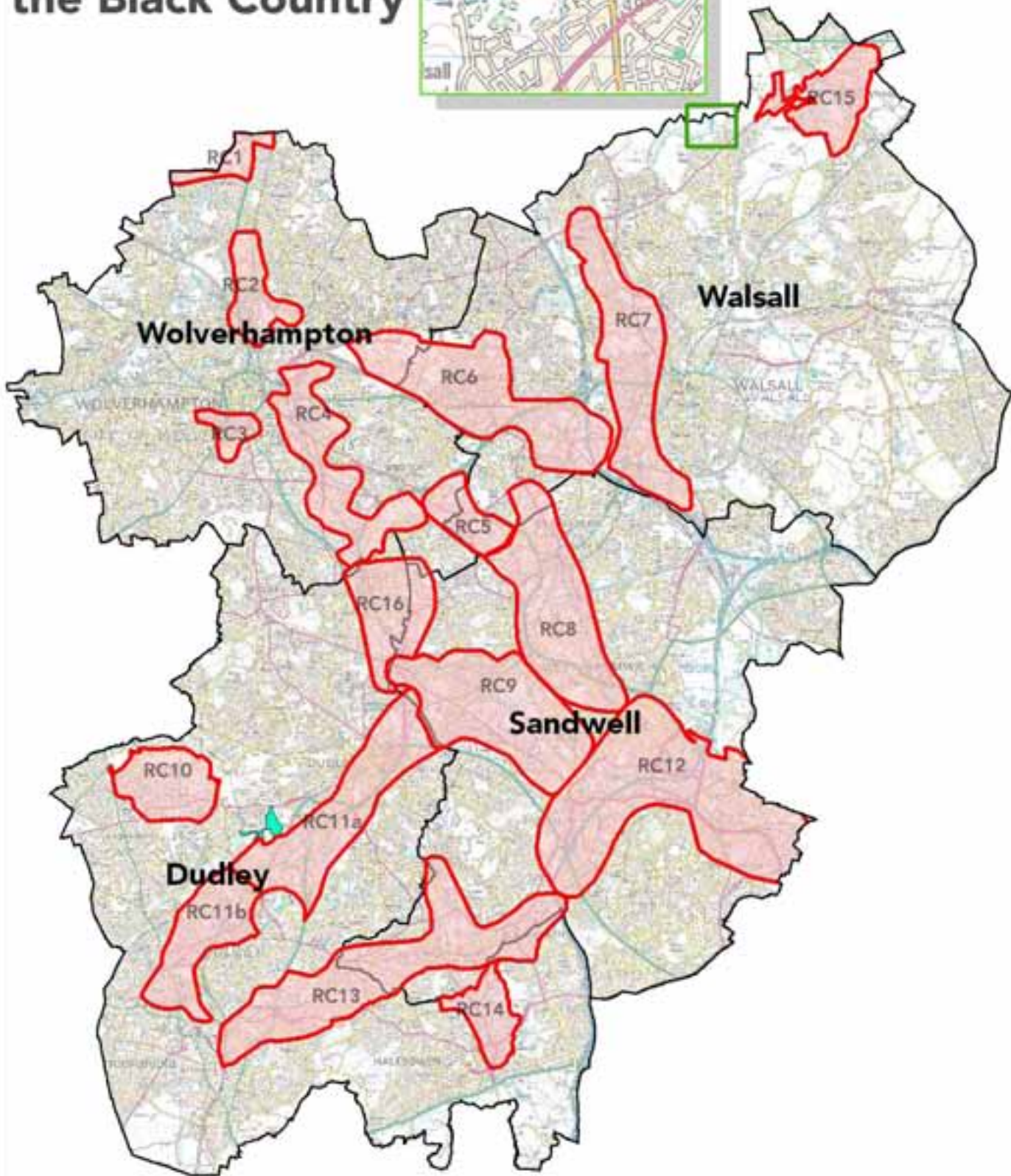
UE
ASSOCIATES
Eagle Tower,
Montpellier Drive,
Cheltenham, GL50 1TA
www.uea.co.uk

Scale
1:160,500

Date
Nov. 2009

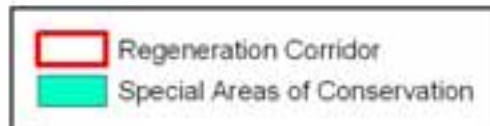
Created by
HLO

Reviewed by
NACB



0 1,500 3,000 6,000
Metres

This map is reproduced from Ordnance Survey material with the permission of Ordnance Survey on behalf of Her Majesty's Stationery Office © Crown copyright. Unauthorised reproduction infringes Crown copyright and may lead to prosecution or civil proceedings. 100019537 / 100019566 / 100032119 / 100019529 (2007)



National Nature Reserves and Local Nature Reserves in the Black Country

UE
 ASSOCIATES
 Eagle Tower,
 Montpellier Drive,
 Cheltenham, GL50 1TA
 www.ue-a.co.uk

Scale
 1:160,500
 Created by
 HLG

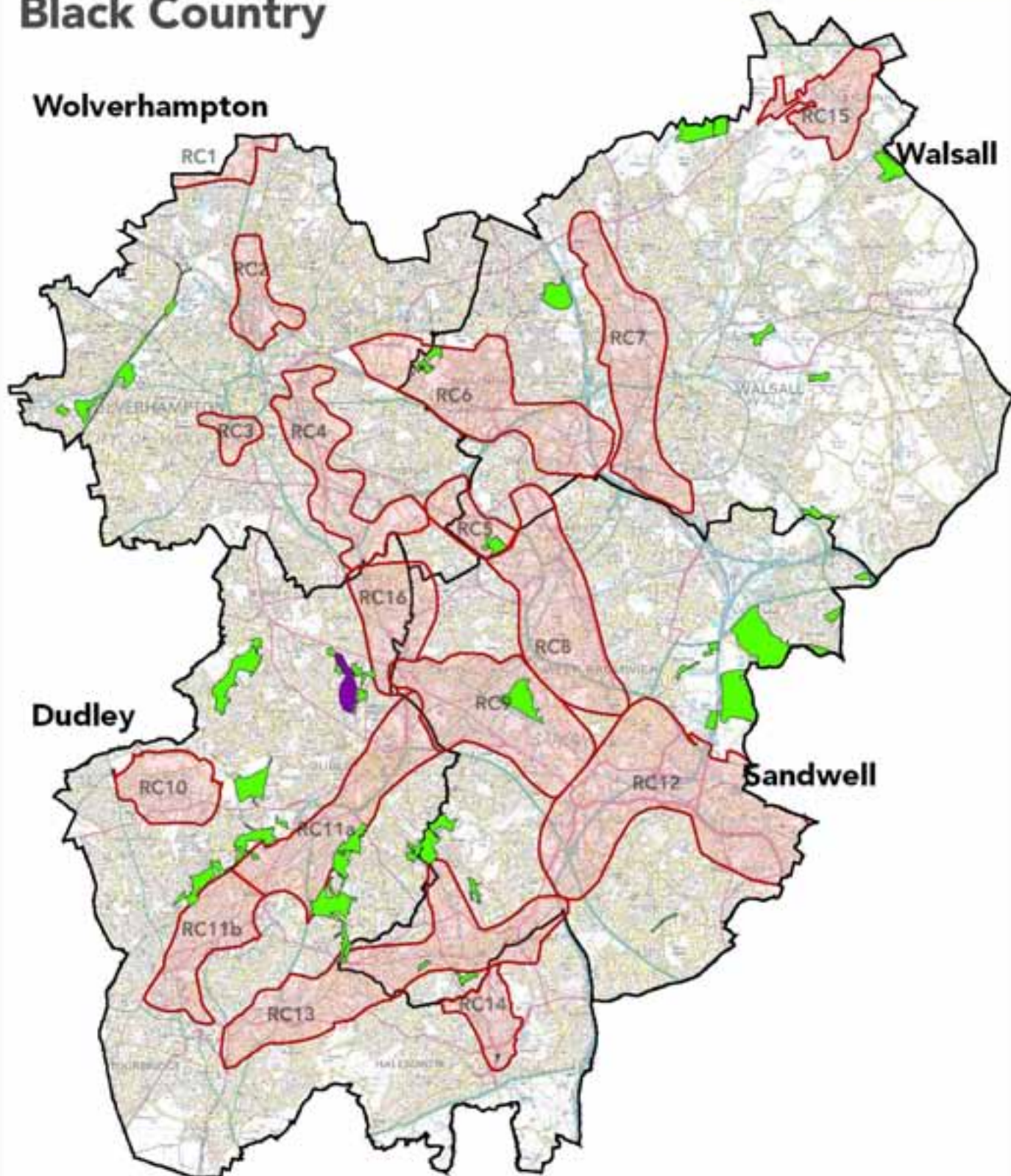
Date
 Nov. 2009
 Reviewed by
 NACB

Wolverhampton

Walsall

Dudley

Sandwell



0 1,625 3,250 6,500 Metres

This map is reproduced from Ordnance Survey material with the permission of Ordnance Survey on behalf of Her Majesty's Stationery Office © Crown copyright. Unauthorised reproduction infringes Crown copyright and may lead to prosecution or civil proceedings. 100019537 / 100019566 / 100032119 / 100019529 (2007)



Community open space in the Black Country



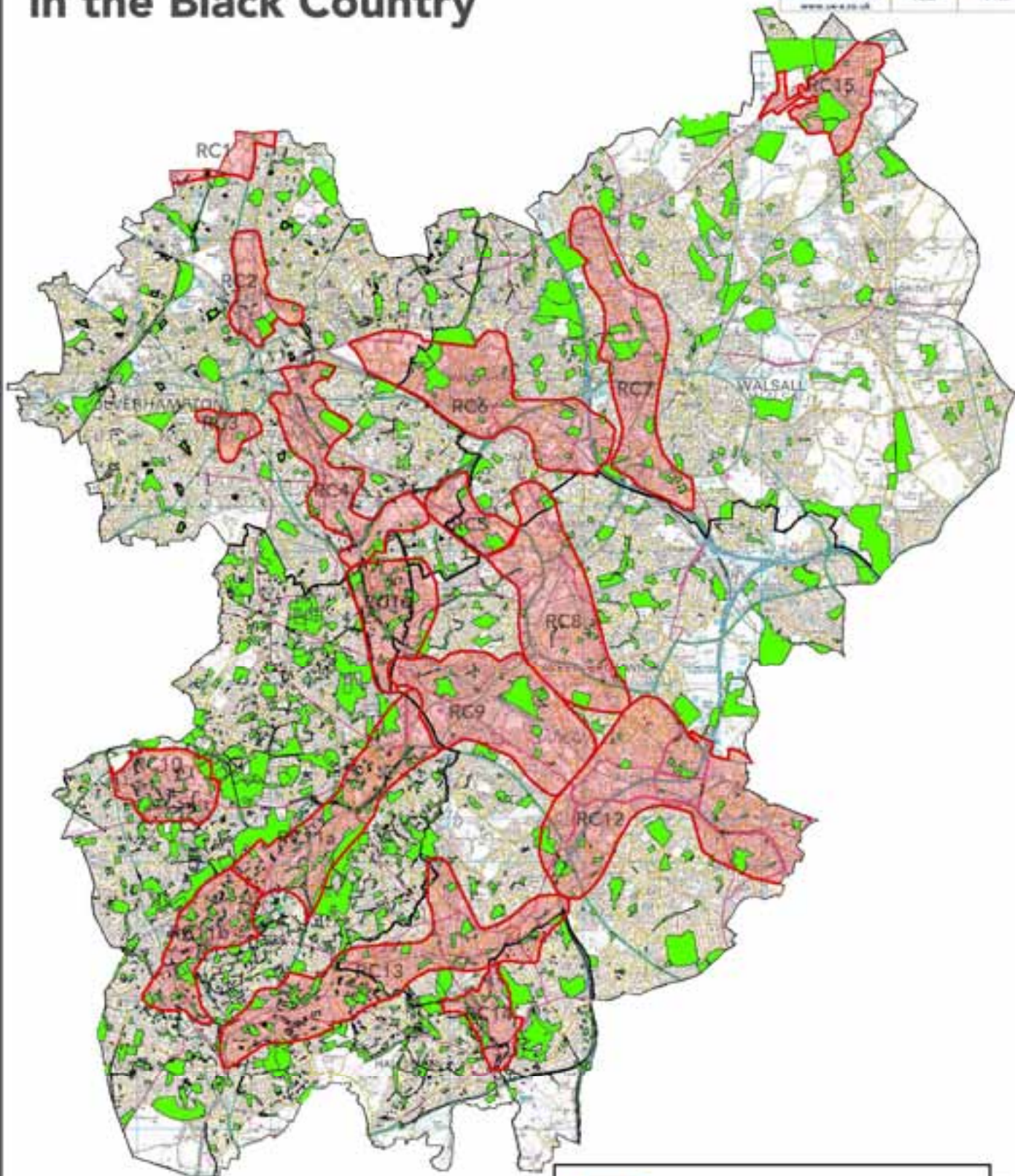
UE
Eagle Tower,
Montpelier Drive,
Chalfont, GL50 1TA
www.ue.co.uk

Scale
1:160,000

Date
Nov. 2009

Created by
H.G.

Reviewed by
NA/CB



0 1,500 3,000 6,000
Metres

This map is reproduced from Ordnance Survey material with the permission of Ordnance Survey on behalf of Her Majesty's Stationery Office © Crown copyright. Unauthorised reproduction infringes Crown copyright and may lead to prosecution or civil proceedings. 100019537 / 100019566 / 100032119 / 100019529 (2007)



Open Spaces

(specifically parks, play areas, recreation grounds, bowling greens, green verges, public gardens, registered parks, church yards, allotments and school playing fields).



Corridors

Biodiversity Action Plan species distribution in the Black Country

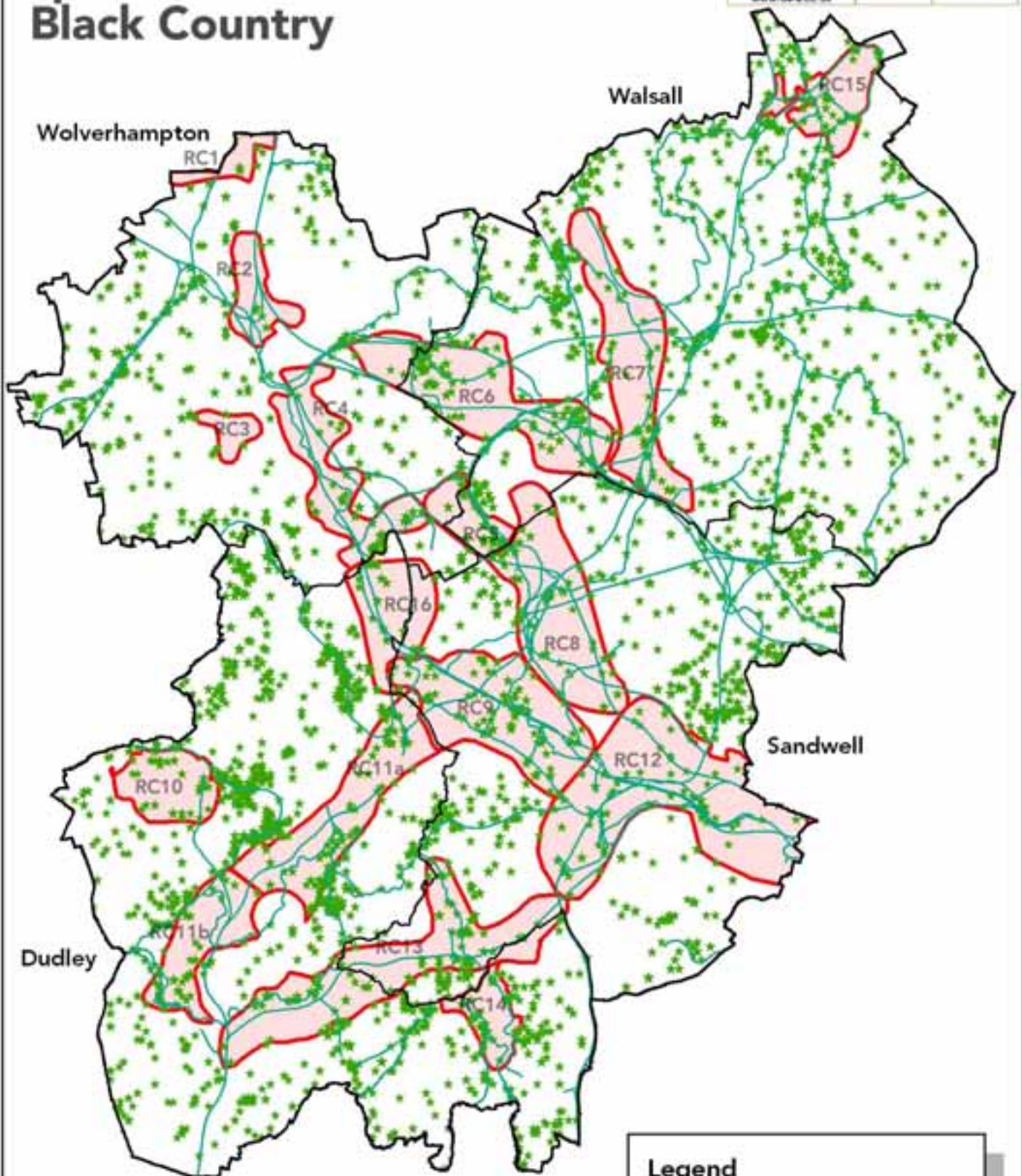
UE
ASSOCIATES
Eagle Tower,
Montpelier Drive,
Cheltenham, GL50 1TA
www.ue-a.co.uk

Scale
1:160,500

Date
Nov. 2009

Created by
HLG

Reviewed by
NACB



0 1,250 2,500 5,000
Metres

This map is reproduced from Ordnance Survey material with the permission of Ordnance Survey on behalf of Her Majesty's Stationery Office © Crown copyright. Unauthorised reproduction infringes Crown copyright and may lead to prosecution or civil proceedings. 100019537 / 100019566 / 100032119 / 100019529 (2007)



Legend

-  Black Country Boundary
-  Wildlife Corridor
-  BAP Species Location
-  Regeneration Corridor